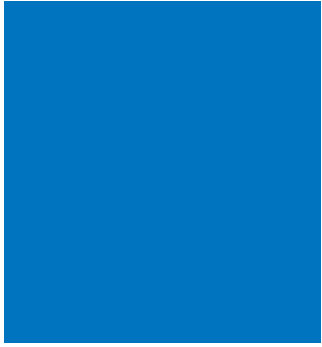
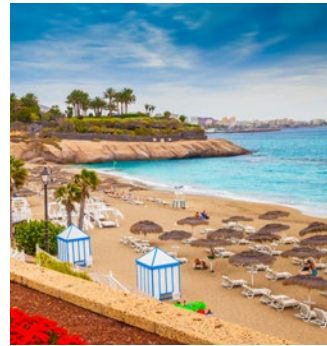


MEMBER'S GUIDE TO

Destination
Xchange[®]
By Diamond Resorts[®]

2021 – 2022

For Owners of weeks at resorts in Europe
which are managed by Diamond Resorts



A vibrant, low-angle photograph of a woman and two young children in a swimming pool. The woman, on the left, is smiling and wearing blue-tinted goggles. The two children, in the center and right, are also wearing goggles and appear to be splashing or playing in the water. The water is bright blue, and the scene is captured with a warm, golden-hour light effect.

Destination Xchange

Destination Xchange provides you with exchange options for a variety of vacation destinations.

We hope you find our Members' Guide a useful tool as you plan your vacation. However, this Guide is not intended to explain every component of membership in detail. The Legal Documentation Booklet containing the Disclosure Guide, Reservation Rules, and full Terms and Conditions of membership and exchange is available for review at any time in the Member Area of DestinationXchange.com. Please consult these documents for further information, details and explanation of requirements for membership and exchange through Destination Xchange.

Key Features

- Search exchange availability prior to deposit
- Simple enrolment and deposit process
- Real time exchange booking and confirmation
- Easy upgrade process for larger units or alternative seasons
- Choose from a wide array of resort destinations worldwide
- A week deposited into Destination Xchange is valid for an exchange reservation for 5 years from the arrival date of the week deposited

Table of Contents

Destination Xchange	5
Guide to Destination Xchange	8
What happens to my week?	9
Enjoy even more vacation options with Destination Xtras!	9
What is the Destination Xchange Tier System?	9
What is my Destination Xchange Tier Code?	9
Can I exchange into different Destination Xchange tiers?	9
Interested in other exchange destinations?	9
Upgrade Fee Chart	9
Premium Exchange Weeks	11
Membership Enrolment	13
Designated Member	13
Membership Duration	13
Depositing Your Week	13
Late Deposits	13
Booking Your Destination Xchange Vacation	13
Reservation Cancellation	13
Destination Xchange Protection Plan	13
Procedures for Checking In and Reservation Rules	13
Guest Certificates	14
Reservations Made for Commercial Gain	14
Helpful Tips	14
Online Member Accounts and Feedback	14
Contact Information and Fee Schedule	15
5 Year Deposit	16
Travel News and Information	17
Additional Member Benefits Coming Soon	18
Over 4,000 Resorts Available Around The World	20
Destinations	22
British Columbia	24
Alberta	24
Arizona	25
California	28
Colorado	32
Florida	32
Hawaii	36
Indiana	39
Maryland	39
Missouri	39
Nevada	39

New Mexico.....	41
North Carolina	41
South Carolina	42
Tennessee	43
Utah	44
Virginia	45
Washington	47
Wisconsin.....	47
San Jose del Cabo	48
San Carlos	48
Nuevo Vallarta	49
Quintana Roo	49
Cozumel	49
Acapulco.....	50
Puerto Vallarta	50
St. Maarten.....	51
Aruba.....	51
Dominican Republic.....	52
England.....	53
Scotland	54
Austria	54
Bulgaria.....	54
Italy.....	55
France	55
Portugal.....	55
Spain	56
South Africa.....	60
Indonesia	62
Thailand	62
Australia	63
New Zealand.....	63
2021 Weeks Calendar	64
2022 Weeks Calendar	65

All features, furnishings and amenities depicted throughout are subject to change. This Program as well as all benefits, fees and property locations are subject to change.

Guide to Destination Xchange



WELCOME! As a member of Destination Xchange, you have the ability to exchange your vacation ownership week IN REAL TIME, to a variety of destinations across different countries, accommodation types, weeks, and seasons, as well as the option to return to your home resort. Exchanges are based on the Destination Xchange Tier system that enables you to upgrade to different levels to accommodate your vacation needs.


What happens to my week?

By enrolling to become a member of Destination Xchange, you will have the opportunity to deposit your vacation ownership week.

Once you have deposited your week you can make an exchange reservation and book an available week at any of the resorts within the Destination Xchange portfolio in the same tier as your deposited week subject to payment of the Standard Exchange Fee.

Upgrade Fees apply for tier upgrade exchanges into higher tiers.

Enjoy even more vacation options with Destination Xtras!

In addition to exchange options, Destination Xchange members can also enjoy special discounts on rental reservations at many of the Destination Xchange resorts that are managed by Diamond Resorts, which are identified in the Destination Xchange Locations section of this guide with the  icon.

With Destination Xtras, members can add additional nights to their exchange reservations, or enjoy the special member discount for additional vacations. Destination Xtras reservations can be booked up to 12 months prior to the member's desired travel date, and no pre-payment is required.

Members can request information on the discounts, resort availability, and book Destination Xtras reservations online by logging in as a member on DestinationXchange.com or DiamondResorts.com, or by calling 0345 401 8004.

TERMS & CONDITIONS FOR DESTINATION XTRAS: Reservations are subject to availability. Destination Xchange membership must be active through the check-out date of preferred travel date. A valid debit or credit card is required at time of booking to guarantee the reservation. Payment is taken upon arrival at the resort. Additional terms and conditions may apply and will be advised at the time of booking.

What is the Destination Xchange Tier System?

The Destination Xchange Tier System is a tool designed to evaluate and identify which vacation ownership weeks are similar. Each resort available to Destination Xchange members will have Tiers assigned to the various accommodations by season and accommodation size.

What is my Destination Xchange Tier Code?

The Tier Code of your vacation ownership week is based on a number of factors including resort location, unit size, season, and demand for location. Please note that the Tier Code of your vacation ownership week may vary each year during your membership in Destination Xchange. To identify the Destination Xchange tier for your vacation ownership week(s), please refer to the Table of Contents to find the resort where you own, and review the tier grid. Please note that floating week owners will first need to make a reservation for their week at their club and then refer to the Table of Contents to establish the Tier Code of the week. You may also visit DestinationXchange.com or contact Member Services for more information on the Tier Code of your vacation ownership week(s).

Can I exchange into different Destination Xchange tiers?

One of the great features of Destination Xchange is that you are not restricted to solely being able to reserve weeks in the same tier as your own. If you choose, you can reserve accommodations in a higher tier by paying an Upgrade Fee in addition to the Standard Exchange Fee. The table below shows the Upgrade Fee charged, in addition to the Standard Exchange Fee, should you wish to exchange to a different tier than the equivalent of the week you deposited. The Standard Exchange Fee is £165 if the exchange reservation is booked over the phone and £155 if booked online.

Interested in other exchange destinations?

If you don't see a destination or resort you're interested in traveling to, give us an opportunity to try to fulfill your vacation request, anywhere in the world. Through our relationships with resorts and hotels beyond those already within Destination Xchange, we'll attempt to fulfill any exchange request to your dream destination, including any specific resorts or hotels you have in mind. (Reservations are subject to availability, payment of Standard Exchange Fee, and Upgrade Fees may apply. All Destination Xchange program terms and conditions apply.)

Upgrade Fee Chart

	TO TIER 1	TO TIER 2	TO TIER 3	TO TIER 4	TO TIER 5	TO TIER 6
FROM TIER 1	£0	£145	£290	£435	£580	£725
FROM TIER 2	£0	£0	£145	£290	£435	£580
FROM TIER 3	£0	£0	£0	£145	£290	£435
FROM TIER 4	£0 (1 for 2)	£0	£0	£0	£145	£290
FROM TIER 5	£0 (1 for 2)	£0 (1 for 2)	£0	£0	£0	£145
FROM TIER 6	£0 (1 for 2)	£0 (1 for 2)	£0	£0	£0	£0

For example, a member who exchanges a Tier 2 vacation ownership week may book at any resort accommodations available in Tier 1 or Tier 2 by paying the Standard Exchange Fee. If the member decides to vacation at a Tier 3 accommodation, they would pay a £145 Upgrade Fee in addition to the Standard Exchange Fee. See the chart above as a reference guide for the cost to upgrade to different tiers.

Members who deposit a Tier 5 week may opt to book two lower tier exchanges in Tier 1 or Tier 2 resort accommodations subject to paying the Standard Exchange Fees on each week.

Members who deposit a Tier 6 week may opt to book two lower tier exchanges in Tier 1 or Tier 2 resort accommodations subject to paying the Standard Exchange Fees on each week.



Premium Exchange Weeks

There are a limited number of exchange options where a £350 Premium Exchange Fee is due in addition to the Standard Exchange Fee and any applicable Upgrade Fees as referenced on page 9. These include extremely highly demanded resorts and dates due to holiday periods or local events which often make availability scarce, or where a specific accommodation type at a resort has limited availability and high demand:

Premium Holiday Weeks

New Year's Eve:

Alhambra Villas
Cabo Azul Resort
Cancún Resort Las Vegas
Cedar Breaks Lodge
Desert Paradise Resort
Ka'anapali Beach Club
Point at Poipu Resort
Polo Towers Resort

President's Day:

Alhambra Villas
Barefoot'n Resort
Bell Rock Inn
Bryan's Spanish Cove
Cancún Resort Las Vegas
Cypress Pointe Resort
Desert Paradise Resort
Grand Beach Resort
Grande Villas Resort
Liki Tiki Village
Los Abridados Resort and Spa
Mystic Dunes Resort & Golf Club
Orbit One Vacation Villas
Parkway International Resort
Polo Towers Resort
Polynesian Isles Resort
Ridge on Sedona Golf Resort
Scottsdale Links Resort
Scottsdale Villa Mirage
Sedona Summit
The Modern Honolulu

Easter:

Alhambra Villas
Barefoot'n Resort
Bell Rock Inn
Bent Creek Golf Village
Bryan's Spanish Cove
Cypress Pointe Resort
Grand Beach Resort
Grande Villas Resort
Liki Tiki Village
Los Abridados Resort and Spa
Mystic Dunes Resort & Golf Club
Orbit One Vacation Villas
Parkway International Resort
Polynesian Isles Resort
Ridge on Sedona Golf Resort
Scottsdale Links Resort
Scottsdale Villa Mirage
Sedona Summit
Sunrise Ridge

Memorial Day:

Cancún Resort Las Vegas
Desert Paradise Resort
The Modern Honolulu
Polo Towers Resort

4th of July:

Alhambra Villas
Barefoot'n Resort
Beach Quarters Resort
Bell Rock Inn
Bent Creek Golf Village
Boardwalk Resort and Villas
Bryan's Spanish Cove
Cancún Resort Las Vegas
Cedar Breaks Lodge
Cypress Pointe Resort
Desert Paradise Resort
Grand Beach Resort
Grande Villas Resort
Liki Tiki Village
Los Abridados Resort and Spa
Mystic Dunes Resort & Golf Club
Orbit One Vacation Villas
Parkway International Resort
Polo Towers Resort
Polynesian Isles Resort
Ridge on Sedona Golf Resort
Scottsdale Links Resort
Scottsdale Villa Mirage
Sedona Summit
Suites at Fall Creek
Sunrise Ridge
The Modern Honolulu
The Modern Honolulu
Turtle Cay Resort

Summer:

Beachwoods Resort
Labor Day:
Lake Tahoe Vacation Resort
Ocean Beach Club Resort
Oceanaire Resort
The Modern Honolulu

Thanksgiving:

Bent Creek Golf Village
Suites at Fall Creek
Sunrise Ridge
The Modern Honolulu

Christmas:

Barefoot'n Resort
Bell Rock Inn
Bent Creek Golf Village
Bryan's Spanish Cove
Cabo Azul Resort
Cedar Breaks Lodge
Cypress Pointe Resort
Grand Beach Resort
Grande Villas Resort
Historic Craggs Lodge
Ka'anapali Beach Club
Lake Tahoe Vacation Resort
Liki Tiki Village
Los Abridados Resort and Spa
Mystic Dunes Resort & Golf Club
Orbit One Vacation Villas
Parkway International Resort

Point at Poipu Resort
Polynesian Isles Resort
Ridge on Sedona Golf Resort
Scottsdale Links Resort
Scottsdale Villa Mirage
Sedona Summit
Sunrise Ridge

Premium Event Weeks

American Music Festival:

Beach Quarters Resort

Art Basel:

Crescent Resort on South Beach

Bike Week:

The Cove on Ormond Beach
Daytona Beach Regency

Coke Zero 400:

The Cove on Ormond Beach
Daytona Beach Regency

Biketoberfest:

The Cove on Ormond Beach
Daytona Beach Regency

Consumer Electronics Show:

Cancún Resort Las Vegas
Desert Paradise Resort
Polo Towers Resort

Daytona 500:

The Cove on Ormond Beach
Daytona Beach Regency

Honolulu Marathon

The Modern Honolulu

Longs Peak Scottish-Irish Festival:

Historic Craggs Lodge

Notre Dame Home Football Game Weekends:

Varsity Clubs of America – South Bend

Notre Dame Graduation:

Varsity Clubs of America – South Bend

Pacific Telecommunications Council:

The Modern Honolulu

Patriotic Festival:

Turtle Cay Resort
Beach Quarters Resort

Regatta:

Flamingo Beach Resort & Spa
Royal Palm Resort

SEMA:

Desert Paradise Resort

Rolux 24:

The Cove on Ormond Beach

Daytona Beach Regency

Tucson Gem Show:

Varsity Clubs of America – Tucson

Phoenix Open:

Scottsdale Links Resort
Scottsdale Villa Mirage

Something in the Water:

Oceanaire Resort
Ocean Beach Club Resort
Turtle Cay Resort
Beach Quarters Resort
Boardwalk Resort & Villas
Boardwalk Resort and Villas

Premium Accommodation Types

Cabo Azul Resort:

3 BDR Penthouse Ocean View
3 BDR Grand Penthouse Ocean View

Ka'anapali Beach Club:

1 BDR Ocean View
1 BDR Deluxe Ocean View
2 BDR Presidential Suite

Kohl's Ranch Lodge:

The Horton House

Los Abridados Resort and Spa:

The Celebrity House
The Stone House
The Morris House

Oceanaire Resort:

3 BDR Lockoff Ocean Front Penthouse
3 BDR Lockoff Ocean Front

Ocean Beach Club Resort:

3 BDR Lockoff Ocean Front
3 BDR Non Ocean Front
3 BDR Lockoff Non Ocean Front

The Historic Powhatan Resort:

2 BDR Deluxe
4 BDR Deluxe

The Modern Honolulu:

1 BDR 2 Bath Ocean View Suite
1 BDR Marina Ocean Front Suite Penthouse

The Point at Poipu Resort:

2 BDR Ocean View
2 BDR Ocean Front
3 BDR Presidential Suite

The Suites at Fall Creek:

2 Bedroom Deluxe

Turtle Cay Resort:

2 bedroom Penthouse

Varsity Clubs of America - South Bend:

The Alumni House



Membership Enrolment

Owners can enrol as a member of Destination Xchange online at DestinationXchange.com or by contacting Member Services at 0345 401 8004.

Designated Member

Each membership must have a designated Primary member who is an individual to whom all communication will be sent. This will be the first named member on the membership.

Membership Duration

Your membership in Destination Xchange will last until terminated in accordance with the terms and conditions and rules of Destination Xchange.

Depositing Your Week

You can deposit your week in accordance with your specific reservation booking rules as defined in your club's constitution. Management charges must be paid in full to deposit your ownership week into Destination Xchange.

If you wish to deposit a week for a future use year for which management charges have not yet been assessed, you must pre-pay estimated management charges based on the assessment for the current use year. Any balance due will be reflected in the subsequent management charge application for payment.

Once you deposit your week into Destination Xchange, it is valid for making an exchange reservation for 5 years from the arrival date of the week deposited. You can deposit your week into Destination Xchange up to 24 months in advance of the start date of the week being deposited, subject to the specific reservations rules for your club. Deposits can be made up to the day before the start date of the week being deposited.

Late Deposits

A Late Deposit Fee of £75 will be charged based on the following criteria:

- Tier 1 and Tier 2 weeks can be deposited up to 3 months (91 days) prior to the arrival date of the week being deposited before the Late Deposit Fee applies.
- Tier 3 and Tier 4 weeks can be deposited up to 31 days prior to the arrival date of the week being deposited before the Late Deposit Fee applies.
- Tier 5 and Tier 6 weeks can be deposited up to 14 days prior to the arrival date of the week being deposited before the Late Deposit Fee applies.

As a great advantage over other exchange providers, the exchange value of your vacation ownership week will not be penalised when depositing late.

Booking Your Destination Xchange Vacation ONLINE

1. Determine where you would like to vacation by logging in at DestinationXchange.com and visiting our Destination page, which provides all destinations available to Destination Xchange members. You may also review the destinations listed in this Guide.
2. Search available accommodations for your preferred resort and travel dates.

3. Pay the Standard Exchange Fee plus any applicable Upgrade Fees and confirm your reservation in REAL TIME! Your Destination Xchange membership must be active through the departure date of your reservation. Standard Exchange Fee is only £155 when you book online.

You may also contact Member Services at 0345 401 8004 and a team member will be glad to help you book your next vacation. Please note the Standard Exchange Fee is £165, however members receive a discount on the Standard Exchange Fee when booking online.

Reservation Cancellation

If you cancel an exchange reservation more than 14 days prior to the arrival date then you will need to pay an Exchange Cancellation Fee of £150 but will then be able to make an alternative exchange request against the deposited week, subject to availability and upon payment of the Standard Exchange Fee and any applicable Upgrade Fees. If you cancel within 14 days of the arrival date then you will need to pay the Exchange Cancellation Fee and you will not be able to make an alternative exchange request, and the deposited week is forfeited.

Regardless of the notice of cancellation given, the Standard Exchange Fee and any applicable Upgrade Fees paid will not be refunded. You are encouraged to purchase the Destination Xchange Protection Plan at the time of booking to safeguard your deposited week and avoid being charged the Exchange Cancellation Fee in the event you need to cancel your exchange reservation.

Destination Xchange Protection Plan

As you are preparing for your vacation, what if:

- you have an unexpected family or work emergency?
- your flights are cancelled?
- weather interferes with your ability to travel?

Members of Destination Xchange have the ability to safeguard their deposited week in case the unexpected happens at vacation time.

Purchasing the Destination Xchange Protection Plan will ensure you are not subject to the Exchange Cancellation Fee should you need to cancel, up to 24 hours prior to arrival date. You will also be able to make an alternative exchange request against the deposited week, subject to availability upon payment of the Standard Exchange Fee and any applicable Upgrade Fees.

Members may only purchase the Destination Xchange Protection Plan at the time of booking each exchange reservation. For pricing information, please refer to the Fee Schedule located on page 15.

Procedures for Checking In and Reservation Rules IN-RESORT RULES

Each occupant of an accommodation must comply with the rules of that resort and Destination Xchange at all times. No member or guest is permitted to keep an animal, bird, fish or other livestock in a resort accommodation other than where resort rules allow, such as in the case of service animals.

CHECK-IN AFTER THE PLANNED ARRIVAL DATE

If you are not intending to check in at the resort on the originally booked date of arrival, or your plans change and you are unable to arrive as previously scheduled, you must contact the resort Front Desk Reception at least 24 hours prior to the original arrival date and advise when you will be arriving. Failure to notify Front Desk Reception may result in the cancellation of the reservation and the possibility that there may be no availability when you arrive.

NON-ARRIVAL

If you do not check in to the resort for your confirmed reservation, you will be considered a no-show. The deposited week will be forfeited and all fees previously paid will not be refunded.

OCCUPANCY OF THE ACCOMMODATION

Reservations can be booked by the members named on the Destination Xchange membership. You may arrange for the reservation to be used by a non-member guest of your choosing by purchasing a Guest Certificate.

Guest Certificates

Would you like to give a family member or friend your requested vacation week as a gift? Destination Xchange welcomes friends and family to our resorts and would love to provide them with the opportunity to create new experiences and adventures. To make this possible, as a Destination Xchange member you can purchase a Guest Certificate for a £25 fee when you confirm your reservation. You can provide the name of the guest who will be checking in at the time of booking the exchange reservation, or thereafter, by contacting Member Services or update the exchange reservation online.

Reservations Made for Commercial Gain

Reservations cannot be made for commercial gain. Destination Xchange has been created for the enjoyment of all members. Reservations made solely to sell or rent, for a profit or significant financial gain, are not permitted. If such practices are discovered, we reserve the right to cancel those reservations and may suspend/cancel the membership.

Helpful Tips

Destination Xchange offers expanded choice and flexibility beyond your traditional ownership usage options, enabling you to vacation when and where you want. Following are some helpful tips to help you get the most out of your membership.

CHANGE OF PLANS? NO PROBLEM!

Life comes with many unexpected events and we understand there may be times when adjustments to your scheduled vacation are needed. This is why, as a member of Destination Xchange, you can purchase the Destination Xchange Protection Plan and have the benefit of cancelling your exchange reservation without losing your deposited week and avoiding an Exchange Cancellation Fee. If you did not purchase the Destination Xchange Protection Plan, you will still be able to make an exchange reservation against your deposited week, subject to availability, provided you cancel more than 14 days prior to the arrival date and pay an Exchange Cancellation Fee and then pay the Standard Exchange Fee and any applicable Upgrade Fees on the new exchange reservation. If you cancel within 14 days of the arrival date then you will need to pay an Exchange Cancellation Fee and you will not be able to make an alternative exchange request, and the deposited week is forfeited.

SAVE TIME AND MONEY BY USING ONLINE SERVICES

For maximum convenience, log in at DestinationXchange.com 24 hours a day to enroll as a member, deposit your ownership weeks, and book your exchange reservations in REAL TIME! By booking your exchange reservations online, you'll receive a discount on the Standard Exchange Fee.

**USE DESTINATION XCHANGE UPGRADES
BASED ON YOUR VACATION NEEDS**

Would you like to vacation during different times of the year? Do you need a larger accommodation for all of your guests? We make it

possible to enjoy all of the locations and accommodations Destination Xchange has to offer with the innovative Destination Xchange Tier System.

Online Member Accounts and Feedback**HOW DO YOU SET UP ONLINE ACCOUNTS?**

Additional program information and updates can be found at DestinationXchange.com. You should keep your contact details updated in order to receive program communications, particularly through email. Here's how to register a member account:

- Go to DestinationXchange.com
- Click on Register next to the login.
- Enter the required fields and set up your username and password.
- A confirmation email will be sent to your email address and you will be asked to validate the account.

ACCESSIBILITY REQUEST

If you require accessible accommodations, please contact the resort directly.



Contact Information and Fee Schedule

Contact Information

Member Services is available
Monday through Friday, 9:00 a.m. to 6:00 p.m.
Saturday 9:00 a.m. to 5:00 p.m.
(Closed Sundays and public bank holidays)

PHONE

Member Services 0345 401 8004

EMAIL

EUContactus@destinationxchange.com

ONLINE

DestinationXchange.com

Fee Schedule

EXCHANGE

Standard Exchange Fee (phone reservation)	£165
Standard Exchange Fee (online reservation)	£155
Upgrade Fees and Premium Exchange Fees.....	see pages 9 & 11
Protection Plan Fee	£50
Guest Certificate Fee	£25
Exchange Cancellation Fee	£150
Late Deposit Fee	£75

The amount of the exchange fees and above charges shall be reviewed each year (or otherwise periodically) by the Operating Company, and are subject to change.



5 Year Deposit

Ownership weeks deposited into Destination Xchange are valid for exchange use for five years from the arrival date of the week deposited. Membership must remain active through the departure date of the exchange reservation booked against a deposited week. This feature provides great flexibility for members in order to:

- Save weeks for exchange use in future use years
- Avoid losing weeks during use years when they cannot travel
- Save weeks to bundle for future multi-week exchange vacations



Travel News and Information

The Journey by Destination Xchange

With your membership, receive The Journey e-newsletter twice a year with useful information to help you stay vacationed. Find special offers, Did You Know articles, the latest news and much more!

Destination Guides

Complimentary, printable guides are ONLY available at Diamond Resorts destinations.

Select Locations at DestinationXchange.com, choose your resort destination, and then Destination Guides. You can view all of the local attractions, events, restaurants and areas of interest. Select Download PDF to print, save or take along.



COMING SOON!

Additional Member Benefits

Be on the lookout for upcoming updates on exciting new Destination Xchange member benefits on a variety of popular services and travel offerings for which charges apply, including:

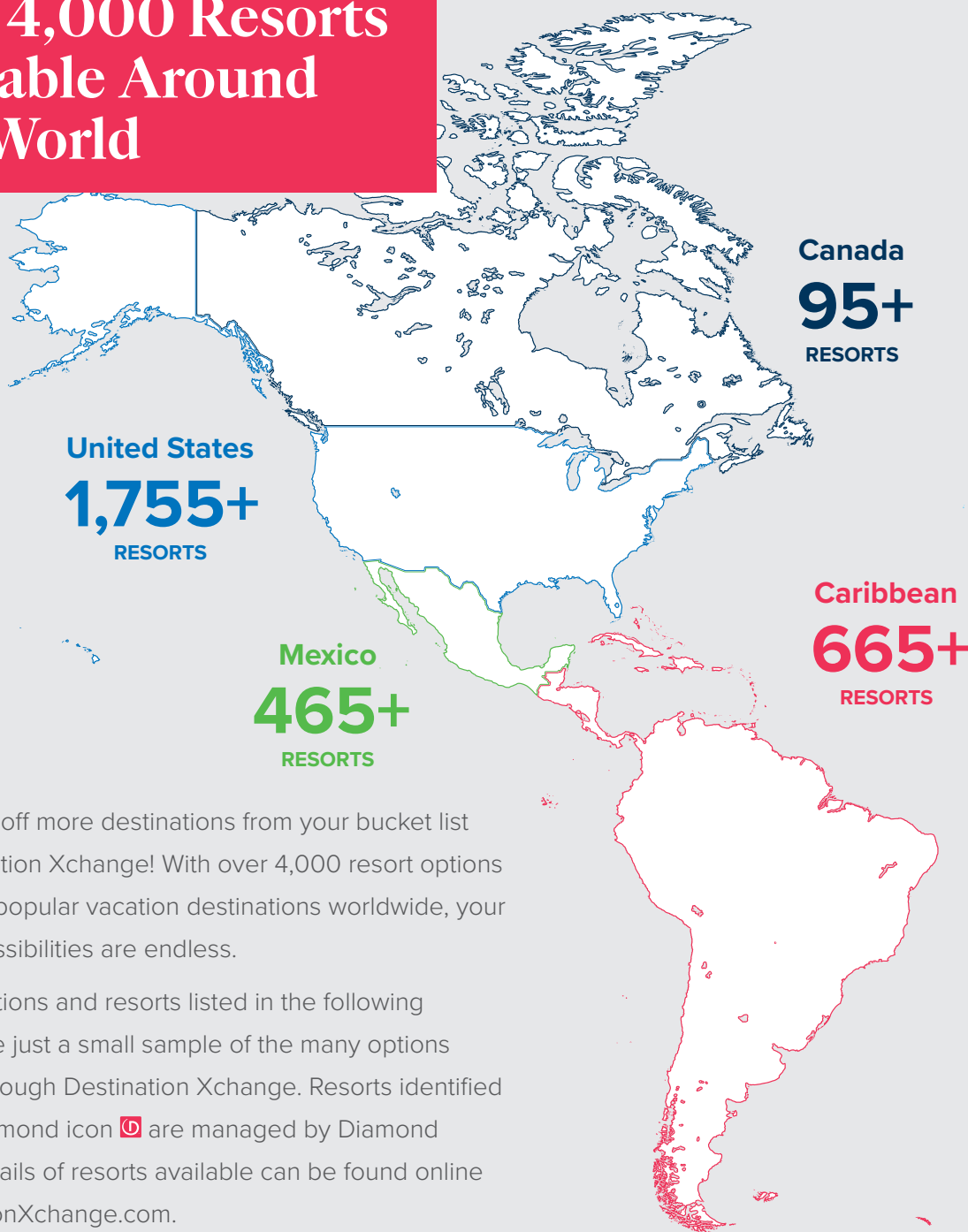
- Legal Protection Plan
- Luggage Delivery Service
(for US resort Destination Xchange reservations only)
- Member Escorted Journeys
- Diamond Luxury Sports experiences
- and many more.

Welcome to


Destination Xchange



Over 4,000 Resorts Available Around The World



Start ticking off more destinations from your bucket list with Destination Xchange! With over 4,000 resort options in the most popular vacation destinations worldwide, your vacation possibilities are endless.

The destinations and resorts listed in the following directory are just a small sample of the many options available through Destination Xchange. Resorts identified with the Diamond icon  are managed by Diamond Resorts. Details of resorts available can be found online at DestinationXchange.com.

Log in at DiamondResorts.com or contact Member Services for assistance with booking your next vacation!

Europe
1,095+
RESORTS

Asia
285+
RESORTS

Africa
210+
RESORTS

Australia
155+
RESORTS

Destinations

BRITISH COLUMBIA	24	Polynesian Isles Resort	33
Clock Tower.....	24	Crescent Resort on South Beach.....	33
VI at Rosedale on Robson	24	Charter Club Resort of Naples Bay	33
ALBERTA	24	Bryan's Spanish Cove	34
Banff Gate Mountain Resort.....	24	Cypress Pointe Resort	34
ARIZONA	25	Grand Beach Resort.....	34
Rancho Manana Resort	25	Grande Villas Resort.....	34
London Bridge Resort	25	The Cove on Ormond Beach	34
Kohl's Ranch Lodge.....	25	Liki Tiki Village	35
PVC at The Roundhouse Resort.....	25	Alhambra Villas.....	35
The Roundhouse Resort.....	26	Alhambra at Poinciana.....	35
Scottsdale Camelback Resort.....	26	HAWAII	36
Scottsdale Links Resort.....	26	Grand Pacific Resorts at Hanalei Bay Resort.....	36
Scottsdale Villa Mirage	26	Grand Pacific Resorts at Makai Club Resort.....	36
Bell Rock Inn	26	Imperial Hawaii Vacation Club.....	36
Los Abrigados Resort & Spa	27	Ke Nani Kai Resort.....	36
Sedona Springs Resort	27	Lawai Beach Resort.....	36
Sedona Summit	27	RVC at Kona Reef Resort.....	37
The Ridge on Sedona Golf Resort.....	27	Kapaa Shore	37
Villas at Poco Diablo.....	28	Royal Kuhio	37
Villas of Sedona	28	Sea Mountain	37
Varsity Clubs of America - Tucson.....	28	Sea Village.....	37
CALIFORNIA	28	Valley Isle	37
Grand Pacific Resorts at Channel Island Shores	28	The Point at Poipu.....	38
Grand Pacific Resorts at Coronado Beach Resort.....	28	Ka'anapali Beach Club.....	38
Grand Pacific Resorts at RiverPointe Napa Valley.....	29	The Modern Honolulu	38
RVC's Cimarron Golf Resort, Palm Springs	29	Grand Pacific at Kauai Beach Villas.....	38
Lodge at Lake Tahoe	29	INDIANA	39
Club Donatello	29	Varsity Clubs of America - South Bend	39
San Luis Bay Inn.....	29	MARYLAND	39
Riviera Beach Resort	30	Coconut Malorie.....	39
Riviera Shores Resort.....	30	MISSOURI	39
Desert Isle of Palm Springs	30	The Suites at Fall Creek	39
Marquis Villas Resort	30	NEVADA	39
Palm Canyon Resort.....	30	Cancún Resort Las Vegas.....	39
Riviera Oaks Resort & Racquet Club.....	31	Desert Paradise Resort	40
Lake Tahoe Vacation Resort	31	Polo Towers Suites	40
Tahoe Beach and Ski Club.....	31	Polo Towers Villas	40
Tahoe Seasons Resort.....	31	The Carriage House.....	40
COLORADO	32	The Ridge Pointe.....	40
The Historic Craggs Lodge.....	32	Kingsbury of Tahoe.....	41
FLORIDA	32	NEW MEXICO	41
Mystic Dunes Resort & Golf Club.....	32	Villas de Santa Fe	41
Barefoot'n Resort.....	32	NORTH CAROLINA	41
Orbit One Vacation Villas	32	Peppertree Atlantic Beach	41
Daytona Beach Regency.....	33	Beachwoods Resort	41
Parkway International Resort.....	33	Fairway Forest Resort.....	42
		SOUTH CAROLINA	42
		Church Street Inn.....	42

Peppertree Ocean Beach Club	42	ARUBA	51	Anantara Vacation Club Phuket Mai Khao	62
Island Links Resort	42	Barcelo Aruba	51	AUSTRALIA	63
Royal Dunes	42	DOMINICAN REPUBLIC	52	Bellbrae Country Club	63
Dunes Village Resort	43	Occidental Punta Cana - Punta Cana	52	Mt. Martha Valley Resort	63
Sandcastle South Resort	43	Grand Palladium Punta Cana Resort & Spa	52	Tamarind Sands	63
Sandpebble Beach Club	43	ENGLAND	53	NEW ZEALAND	63
Sea Mystique	43	Cromer Country Club	53	Anantara Vacation Club at Oaks Shores	63
TENNESSEE	43	Pine Lake Resort	53		
Bent Creek Golf Village	43	Thurnham Hall	53		
Sunrise Ridge Resort	44	Woodford Bridge Country Club	53		
UTAH	44	Wychnor Park Country Club	54		
RVC's The Miner Club	44	SCOTLAND	54		
Cedar Breaks Lodge & Spa	44	The Kenmore Club	54		
Park Plaza Resort	44	AUSTRIA	54		
VIRGINIA	45	The Alpine Club	54		
Beach Quarters Resort	45	BULGARIA	54		
Boardwalk Resort and Villas	45	Balkan Jewel Resort	54		
Ocean Beach Club	45	ITALY	55		
Oceanaire Resort	46	Palazzo Catalani	55		
Turtle Cay Resort	46	FRANCE	55		
Greensprings Vacation Resort	46	Le Club Mougins	55		
The Historic Powhatan Resort	46	Royal Regency	55		
WASHINGTON	47	PORTUGAL	55		
RVC's Sandcastle at Birch Bay	47	Vilar do Golf	55		
Blackbird Lodge	47	SPAIN	56		
Point Brown	47	Cala Blanca	56		
VI at Homestead	47	Club del Carmen	56		
WISCONSIN	47	Jardines del Sol	56		
Mirror Lake & Tamarack Resort	47	Los Amigos Beach Club	56		
SAN JOSE DEL CABO	48	Royal Oasis Club at Pueblo Quinta	57		
Cabo Azul Resort & Spa	48	Royal Sunset Beach Club	57		
RVC's Club Regina Los Cabos	48	Royal Tenerife Country Club	57		
SAN CARLOS	48	Sahara Sunset	57		
Sea of Cortez Beach Club	48	Santa Barbara Golf and Ocean Club	58		
NUEVO VALLARTA	49	Sunset Bay Club	58		
Grand Luxxe Nuevo Vallarta	49	Sunset Harbour Club	58		
QUINTANA ROO	49	Sunset View Club	58		
Grand Luxxe Riviera Maya	49	White Sands Beach Club	59		
Laguna Suites Golf and Spa	49	SOUTH AFRICA	60		
COZUMEL	49	Avalon Springs	60		
Allegro Cozumel	49	Breakers Resort	60		
ACAPULCO	50	Champagne Sports Resort	60		
Mayan Palace Acapulco	50	The Peninsula	60		
PUERTO VALLARTA	50	Wilderness Dunes	61		
RVC's Club Regina Puerto Vallarta	50	INDONESIA	62		
ST. MAARTEN	51	Anantara Vacation Club Bali Seminyak	62		
Flamingo Beach Resort	51	THAILAND	62		
Royal Palm Beach Resort	51	Anantara Vacation Club Bophut Koh Samui	62		
Atrium Resort Beach and Spa	51				

BRITISH COLUMBIA



Clock Tower

4341 Village Lane, Whistler, British Columbia, Canada, V0N 1B4, +1.604.932.4724

Accommodation	Occupancy	Low Season	Mid Season	High Season	Peak Season
Studio	2/2	-	TIER 1	TIER 2	TIER 3
2021 WEEKS			17-21, 23-24, 37-47, 49-50	1-12, 15-16, 22, 25-26, 28-36	13-14, 27, 48, 51-53
2022 WEEKS			17-20, 22-24, 37-46, 48-50	1-13, 16, 21, 25, 27-36	14-15, 26, 47, 51-52

Check-in day for weekly occupancy: Saturday. No elevator. A security deposit is collected upon check-in and is refundable upon check-out. An accommodations/lodging tax is payable at check-in due to state and local regulations. The nightly tax rate varies by accommodation size and season. Parking is available on a first come, first serve basis at a cost, payable upon check-in.



VI at Rosedale on Robson

838 Hamilton Street, Vancouver, British Columbia, Canada, V6B 6A2, +1.604.689.8033

Accommodation	Occupancy	Low Season	Mid Season	High Season	Peak Season
1 BDR	4/2	TIER 1	TIER 1	TIER 2	TIER 3
2021 WEEKS		1-9	10-12, 15-23, 37-47, 49-50	24-26, 28-36	13-14, 27, 48, 51-53
2022 WEEKS		1-9	10-13, 16-23, 37-46, 48-50	24-25, 27-36	14-15, 26, 47, 51-52

Check-in day for weekly occupancy: Friday. A security deposit of \$100 (Canadian dollars) is required at check-in. There is a Goods and Service Tax (GST) and a Provincial Tax (PST) that applies, which will be collected upon check-out. Underground parking is available for a daily rate. Office Hours: 9am to 5pm. If arriving late, please contact the resort for late check-in procedures.

ALBERTA



Banff Gate Mountain Resort

302 George Biggy Sr Road, Dead Man's Flats, Alberta T1W 2T8, Canada, +1.403.609.9229

Accommodation	Occupancy	Low Season	Mid Season	High Season	Peak Season
2 BDR	6/4	TIER 2	TIER 2	TIER 3	TIER 3
2021 WEEKS		1-9	10-12, 15-23, 37-47, 49-50	24-26, 28-36	13-14, 27, 48, 51-53
2022 WEEKS		1-9	10-13, 16-23, 37-46, 48-50	24-25, 27-36	14-15, 26, 47, 51-52

Check-in day for weekly occupancy: Friday/Saturday. A \$100 authorization hold will also be placed on a credit card upon check-in for incidentals. Resort charges a fee in the amount of \$9.35 US dollars plus 5% Canadian tax/day paid by guests directly to the resort upon check-in. This mandatory fee includes access to WiFi, unlimited movie rentals, and additional resort amenities. Guests must contact resort if arriving late or on a day other than what is listed on confirmation.

ARIZONA



Rancho Manana Resort

5720 East Rancho Manana Boulevard, Cave Creek, Arizona 85331, United States, +1.480.575.7900

Accommodation	Occupancy	Low Season	Mid Season	High Season	Peak Season
2 BDR	4/4	-	TIER 3	TIER 4	TIER 5
2 BDR Golf Course View	4/4	-	TIER 4	TIER 4	TIER 5
2 BDR Family	6/4	-	TIER 4	TIER 4	TIER 5
2021 WEEKS			1-3, 47, 49-50	4-12, 15-26, 28-46	13-14, 27, 48, 51-53
2022 WEEKS			1-3, 48-50	4-13, 16-25, 27-46	14-15, 26, 47, 51-52

Check-in day for weekly occupancy: Any day. No elevator.



London Bridge Resort

1477 Queens Drive, Lake Havasu City, Arizona 86403, United States, +1.800.624.7939

Accommodation	Occupancy	Low Season	Mid Season	High Season	Peak Season
1 BDR	4/2	TIER 1	TIER 2	TIER 3	TIER 3
2 BDR	6/4	TIER 2	TIER 3	TIER 4	TIER 4
2021 WEEKS		1-4, 49-50	5, 7-8, 16-17, 36-39, 44-45	6, 9-15, 18-23, 40-43, 46-48	24-35, 51-53
2022 WEEKS		1-4, 49-50	5, 7-8, 16-17, 36-39, 44-45	6, 9-15, 18-23, 40-43, 46-48	24-35, 51-52

Check-in day for weekly occupancy: Friday / Saturday / Sunday.



Kohl's Ranch Lodge

202 South Kohl's Ranch Lodge Road, Payson, Arizona 85541, United States, +1.928.478.4211

Accommodation	Occupancy	Low Season	Mid Season	High Season	Peak Season
Studio Efficiency	2/2	-	TIER 1	TIER 1	TIER 1
Studio	2/2	-	TIER 1	TIER 1	TIER 2
1 BDR	4/2	-	TIER 2	TIER 2	TIER 3
2 BDR Cabin	6/2	-	TIER 3	TIER 3	TIER 4
2 BDR Cabin Deluxe	8/4	-	TIER 4	TIER 4	TIER 5
The Horton House	8/4	-	TIER 6	TIER 6	TIER 6
2021 WEEKS			1-7, 47, 49-50	8-12, 15-16, 18-21, 23-24, 28-30, 32-35, 37-38, 42-46	13-14, 17, 22, 25-27, 31, 36, 39-41, 48, 51-53
2022 WEEKS			1-7, 48-50	8-13, 16, 18-20, 22-24, 28-30, 32-34, 36-38, 42-46	14-15, 17, 21, 25-27, 31, 35, 39-41, 47, 51-52

Check-in day for weekly occupancy: Any day.



PVC at The Roundhouse Resort

5801 Bucksprings Road, Pinetop, Arizona 85935, United States, +1.928.369.5100

Accommodation	Occupancy	Low Season	Mid Season	High Season	Peak Season
2 BDR Cabin	6/4	-	TIER 4	TIER 4	TIER 5
2 BDR Cabin Deluxe	6/4	-	TIER 4	TIER 5	TIER 5
2021 WEEKS			1-7, 47, 49-50	8-12, 15-16, 18-21, 23-24, 28-30, 32-35, 37-38, 42-46	13-14, 17, 22, 25-27, 31, 36, 39-41, 48, 51-53
2022 WEEKS			1-7, 48-50	8-13, 16, 18-20, 22-24, 28-30, 32-34, 36-38, 42-46	14-15, 17, 21, 25-27, 31, 35, 39-41, 47, 51-52

Check-in day for weekly occupancy: Any day.



The Roundhouse Resort

5829 Bucksprings Road, Pinetop, Arizona 85935, United States, +1.928.369.4848

Accommodation	Occupancy	Low Season	Mid Season	High Season	Peak Season
1 BDR	4/2	-	TIER 1	TIER 2	TIER 2
2 BDR	6/4	-	TIER 2	TIER 3	TIER 3
2021 WEEKS			1-7, 47, 49-50	8-12, 15-16, 18-21, 23-24, 28-30, 32-35, 37-38, 42-46	13-14, 17, 22, 25-27, 31, 36, 39-41, 48, 51-53
2022 WEEKS			1-7, 48-50	8-13, 16, 18-20, 22-24, 28-30, 32-34, 36-38, 42-46	14-15, 17, 21, 25-27, 31, 35, 39-41, 47, 51-52

Check-in day for weekly occupancy: Friday. No elevator.



Scottsdale Camelback Resort

6302 East Camelback Road, Scottsdale, Arizona 85251, United States, +1.480.947.3300

Accommodation	Occupancy	Low Season	Mid Season	High Season	Peak Season
Studio Deluxe	4/2	-	TIER 1	TIER 2	TIER 3
2 BDR	6/4	-	TIER 2	TIER 3	TIER 4
2 BDR Deluxe	6/4	-	TIER 3	TIER 4	TIER 4
3 BDR Suite	8/6	-	TIER 5	TIER 5	TIER 6
2021 WEEKS			1-3, 47, 49-50	4-12, 15-26, 28-46	13-14, 27, 48, 51-53
2022 WEEKS			1-3, 48-50	4-13, 16-25, 27-46	14-15, 26, 47, 51-52

Check-in day for weekly occupancy: Friday / Saturday / Sunday. No elevator.



Scottsdale Links Resort

16858 North Perimeter Drive, Scottsdale, Arizona 85260, United States, +1.480.563.0500

Accommodation	Occupancy	Low Season	Mid Season	High Season	Peak Season
1 BDR	4/2	TIER 1	TIER 2	TIER 3	TIER 4
2 BDR	6/4	TIER 2	TIER 3	TIER 4	TIER 4
3 BDR	8/6	TIER 3	TIER 4	TIER 4	TIER 5
2021 WEEKS		28-33	25-27, 43-50	18-24, 34-42	1-17, 51-53
2022 WEEKS		28-33	25-27, 43-50	18-24, 34-42	1-17, 51-52

Check-in day for weekly occupancy: Any day.



Scottsdale Villa Mirage

7887 East Princess Boulevard, Scottsdale, Arizona 85255, United States, +1.480.473.4000

Accommodation	Occupancy	Low Season	Mid Season	High Season	Peak Season
Studio	4/2	-	TIER 1	TIER 1	TIER 2
1 BDR	4/2	-	TIER 2	TIER 2	TIER 3
2 BDR	8/6	-	TIER 3	TIER 4	TIER 5
2021 WEEKS			1-3, 47, 49-50	5-12, 15-26, 28-46	4, 13-14, 27, 48, 51-53
2022 WEEKS			1-3, 48-50	5-13, 16-25, 27-46	4, 14-15, 26, 47, 51-52

Check-in day for weekly occupancy: Any day.



Bell Rock Inn

6246 State Route 179, Sedona, Arizona 86351, United States, +1.928.282.4161

Accommodation	Occupancy	Low Season	Mid Season	High Season	Peak Season
Studio Efficiency	4/2	-	TIER 1	TIER 1	TIER 1
Studio	4/2	-	TIER 1	TIER 1	TIER 2
1 BDR	4/4	-	TIER 1	TIER 2	TIER 2
2 BDR	6/6	-	TIER 2	TIER 3	TIER 3
2021 WEEKS			1-3, 47, 49-50	4-12, 15-26, 28-46	13-14, 27, 48, 51-53
2022 WEEKS			1-3, 48-50	4-13, 16-25, 27-46	14-15, 26, 47, 51-52

Check-in day for weekly occupancy: Any day.



Los Abrigados Resort & Spa

160 Portal Lane, Sedona, Arizona 86336, United States, +1.928.282.1777

Accommodation	Occupancy	Low Season	Mid Season	High Season	Peak Season
Studio Efficiency	2/2	-	TIER 1	TIER 1	TIER 1
1 BDR	4/2	-	TIER 2	TIER 3	TIER 4
1 BDR Standard	4/2	-	TIER 2	TIER 3	TIER 4
1 BDR Deluxe	4/2	-	TIER 3	TIER 3	TIER 4
2 BDR	6/4	-	TIER 3	TIER 4	TIER 5
2 BDR Family	8/4	-	TIER 4	TIER 4	TIER 5
2 BDR Deluxe	6/6	-	TIER 4	TIER 5	TIER 5
2 BDR Suite	6/6	-	TIER 4	TIER 5	TIER 6
The Morris House	6/4	-	TIER 6	TIER 6	TIER 6
The Celebrity House	6/4	-	TIER 6	TIER 6	TIER 6
The Stone House	6/4	-	TIER 6	TIER 6	TIER 6
2021 WEEKS			1-3, 47, 49-50	4-12, 15-26, 28-46	13-14, 27, 48, 51-53
2022 WEEKS			1-3, 48-50	4-13, 16-25, 27-46	14-15, 26, 47, 51-52

Check-in day for weekly occupancy: Any day.



Sedona Springs Resort

55 Northview Road, Sedona, Arizona 86336, United States, +1.928.204.3400

Accommodation	Occupancy	Low Season	Mid Season	High Season	Peak Season
2 BDR	8/6	-	TIER 4	TIER 4	TIER 5
2021 WEEKS			1-3, 47, 49-50	4-12, 15-26, 28-46	13-14, 27, 48, 51-53
2022 WEEKS			1-3, 48-50	4-13, 16-25, 27-46	14-15, 26, 47, 51-52

Check-in day for weekly occupancy: Saturday.



Sedona Summit

4055 Navoti Drive, Sedona, Arizona 86336, United States, +1.928.204.3100

Accommodation	Occupancy	Low Season	Mid Season	High Season	Peak Season
Studio	4/2	-	TIER 1	TIER 2	TIER 3
Studio Mesa Suite	4/2	-	TIER 1	TIER 2	TIER 3
1 BDR	4/4	-	TIER 2	TIER 3	TIER 4
1 BDR Mesa Suite	4/4	-	TIER 3	TIER 3	TIER 4
1 BDR Sunset Suite	4/2	-	TIER 3	TIER 4	TIER 5
2 BDR	8/4	-	TIER 3	TIER 4	TIER 5
2 BDR Mesa Suite	8/4	-	TIER 4	TIER 5	TIER 6
2 BDR Sunset Suite	6/4	-	TIER 5	TIER 5	TIER 6
3 BDR Sunset Suite	10/6	-	TIER 5	TIER 6	TIER 6
2021 WEEKS			1-3, 47, 49-50	4-12, 15-26, 28-46	13-14, 27, 48, 51-53
2022 WEEKS			1-3, 48-50	4-13, 16-25, 27-46	14-15, 26, 47, 51-52

Check-in day for weekly occupancy: Any day.



The Ridge on Sedona Golf Resort

55 Sunridge Circle, Sedona, Arizona 86351, United States, +1.928.284.1200

Accommodation	Occupancy	Low Season	Mid Season	High Season	Peak Season
Studio	4/2	-	TIER 1	TIER 2	TIER 3
1 BDR	4/4	-	TIER 2	TIER 3	TIER 4
2 BDR	8/6	-	TIER 3	TIER 4	TIER 5
2021 WEEKS			1-3, 47, 49-50	4-12, 15-26, 28-46	13-14, 27, 48, 51-53
2022 WEEKS			1-3, 48-50	4-13, 16-25, 27-46	14-15, 26, 47, 51-52

Check-in day for weekly occupancy: Any day.



Villas at Poco Diablo

1752 Highway 179, Sedona, Arizona 86336, United States, +1.928.204.3300

Accommodation	Occupancy	Low Season	Mid Season	High Season	Peak Season
Studio	4/2	-	TIER 1	TIER 1	TIER 2
1 BDR	4/2	-	TIER 1	TIER 1	TIER 2
2021 WEEKS			1-3, 47, 49-50	4-12, 15-26, 28-46	13-14, 27, 48, 51-53
2022 WEEKS			1-3, 48-50	4-13, 16-25, 27-46	14-15, 26, 47, 51-52

Check-in day for weekly occupancy: Friday.



Villas of Sedona

120 Kallof Place, Sedona, Arizona 86336, United States, +1.928.204.3400

Accommodation	Occupancy	Low Season	Mid Season	High Season	Peak Season
1 BDR		-	TIER 2	TIER 2	TIER 3
2 BDR	6/4	-	TIER 2	TIER 3	TIER 4
2021 WEEKS			1-3, 47, 49-50	4-12, 15-26, 28-46	13-14, 27, 48, 51-53
2022 WEEKS			1-3, 48-50	4-13, 16-25, 27-46	14-15, 26, 47, 51-52

Check-in at Sedona Springs Resort. Check-in day for weekly occupancy: Friday.



Varsity Clubs of America - Tucson

3855 East Speedway Boulevard, Tucson, Arizona 85716, United States, +1.520.318.6800

Accommodation	Occupancy	Low Season	Mid Season	High Season	Peak Season
Studio	2/2	TIER 1	TIER 1	TIER 1	TIER 1
1 BDR	4/2	TIER 1	TIER 1	TIER 2	TIER 2
2 BDR	6/4	TIER 1	TIER 2	TIER 3	TIER 3
2021 WEEKS		28-33	25-27, 43-50	18-24, 34-42	1-17, 51-53
2022 WEEKS		28-33	25-27, 43-50	18-24, 34-42	1-17, 51-52

Check-in day for weekly occupancy: Any day.

CALIFORNIA



Grand Pacific Resorts at Channel Island Shores

1311 Mandalay Beach Road, Oxnard, California 93035, United States, +1.805.330.9271

Accommodation	Occupancy	Low Season	Mid Season	High Season	Peak Season
2 BDR	6/4	-	-	TIER 4	TIER 5
2021 WEEKS				1-12, 15-26, 28-47, 49-50	13-14, 27, 48, 51-53
2022 WEEKS				1-13, 16-25, 27-46, 48-50	14-15, 26, 47, 51-52

Check-in day for weekly occupancy: Friday. Daily resort fee of \$16.00 plus tax applies. Subject to change. A local/resort tax will be charged by the resort. No elevator. No air conditioning. A credit card is required upon check-in to collect a security hold for incidentals. If arriving after 6pm, please contact the resort prior to arrival for late check-in instructions.



Grand Pacific Resorts at Coronado Beach Resort

1415 Orange Avenue, Coronado, California 92118, United States, +1.619.522.6000

Accommodation	Occupancy	Low Season	Mid Season	High Season	Peak Season
Studio	2/2	-	-	TIER 2	TIER 3
1 BDR	4/2	-	-	TIER 3	TIER 4
2 BDR	6/4	-	-	TIER 5	TIER 5
2021 WEEKS				1-12, 15-26, 28-47, 49-50	13-14, 27, 48, 51-53
2022 WEEKS				1-13, 16-25, 27-46, 48-50	14-15, 26, 47, 51-52

Check-in day for weekly occupancy: Sunday. Daily resort fee of \$20.00 plus tax applies. Subject to change. A local/resort tax is charged by the resort. There is a one vehicle limit per accommodation.



Grand Pacific Resorts at RiverPointe Napa Valley

500 Lincoln Avenue, Napa, California 94558, United States, +1.707.252.4200

Accommodation	Occupancy	Low Season	Mid Season	High Season	Peak Season
1 BDR	4/2	-	TIER 2	TIER 2	TIER 3
2021 WEEKS			1-6, 47, 49-50	7-12, 15-26, 28-46	13-14, 27, 48, 51-53
2022 WEEKS			1-6, 48-50	7-13, 16-25, 27-46	14-15, 26, 47, 51-52

Check-in day for weekly occupancy: Saturday / Sunday. Daily resort fee of \$15.00 plus tax applies. Subject to change. A local/ resort tax is charged by the resort. If arriving after 11pm, please contact the resort prior to arrival for late check-in instructions.



RVC's Cimarron Golf Resort, Palm Springs

67-707 30th Avenue, Cathedral City, California 92234, United States, +1.760.324.9911

Accommodation	Occupancy	Low Season	Mid Season	High Season	Peak Season
2 BDR	6/6	TIER 3	TIER 4	TIER 4	TIER 5
2021 WEEKS		29-32	17-21, 23, 33-47, 49-50	1-12, 15-16, 22, 24-26, 28	13-14, 27, 48, 51-53
2022 WEEKS		29-32	17-20, 22-23, 33-46, 48-50	1-13, 16, 21, 24-25, 27-28	14-15, 26, 47, 51-52

Check-in day for weekly occupancy: Friday / Saturday / Sunday. Daily resort fee of \$15.00 plus tax applies.



Lodge at Lake Tahoe

3840 Pioneer Trail, South Lake Tahoe, California 96150, United States, +1.530.541.6226

Accommodation	Occupancy	Low Season	Mid Season	High Season	Peak Season
1 BDR	4/2	TIER 1	TIER 2	TIER 3	TIER 4
2021 WEEKS		17-20, 40-46	21-26, 33-39, 47, 49-50	1-12, 15-16, 28-32	13-14, 27, 48, 51-53
2022 WEEKS		17-20, 40-46	21-25, 27, 33-39, 48-50	1-13, 16, 28-32	14-15, 26, 47, 51-52

Check-in day for weekly occupancy: Friday / Saturday / Sunday. Limited availability. No air conditioning. A refundable security deposit of \$50 is due upon check-in. Front Desk hours: Sunday to Thursday: 8am to 7pm; Friday to Saturday: 8am to midnight. If arriving late, please contact the resort prior to arrival for late check-in instructions.



Club Donatello

501 Post Street, San Francisco, California 94102, United States, +1.415.441.7100

Accommodation	Occupancy	Low Season	Mid Season	High Season	Peak Season
Hotel Room	2/2	TIER 1	TIER 1	TIER 2	TIER 3
2021 WEEKS		1-4, 49-50	5-12, 41, 44-48	13-23, 38-40, 42-43, 51-53	24-37
2022 WEEKS		1-4, 49-50	5-12, 41, 44-48	13-23, 38-40, 42-43, 51-52	24-37

Check-in day for weekly occupancy: Thursday. \$25/week resort fee. Current parking rate is \$42/day, + \$20 for oversized vehicles. \$25 fee for each Cot/Rollaway bed.



San Luis Bay Inn

3254 Avila Beach Drive, Avila Beach, California 93424, United States, +1.805.595.2333

Accommodation	Occupancy	Low Season	Mid Season	High Season	Peak Season
Studio	4/2	-	TIER 1	TIER 1	TIER 2
1 BDR	4/2	-	TIER 2	TIER 2	TIER 3
2 BDR	6/4	-	TIER 3	TIER 4	TIER 5
2021 WEEKS			1-6, 47, 49-50	7-12, 15-26, 28-46	13-14, 27, 48, 51-53
2022 WEEKS			1-6, 48-50	7-13, 16-25, 27-46	14-15, 26, 47, 51-52

Check-in day for weekly occupancy: Any day.



Riviera Beach Resort

34630 Pacific Coast Highway, Capistrano Beach, California 92624, United States, +1.949.248.2944

Accommodation	Occupancy	Low Season	Mid Season	High Season	Peak Season
1 BDR Ocean View	4/2	-	-	TIER 3	TIER 3
1 BDR/2 BA Ocean View	4/4	-	-	TIER 3	TIER 4
2 BDR Non-Ocean View	6/4	-	-	TIER 3	TIER 3
2 BDR Ocean View	6/4	-	-	TIER 4	TIER 4
2021 WEEKS				1-6, 8-13, 15-21, 39-47, 49-50	7, 14, 22-38, 48, 51-53
2022 WEEKS				1-6, 8-14, 16-20, 22, 39-46, 48-50	7, 15, 21, 23-38, 47, 51-52

Check-in day for weekly occupancy. Any day.



Riviera Shores Resort

34630 Pacific Coast Highway, Capistrano Beach, California 92624, United States, +1.949.489.5555

Accommodation	Occupancy	Low Season	Mid Season	High Season	Peak Season
Deluxe Studio Ocean View	4/2	-	-	-	TIER 3
1 BDR Ocean View	4/2	-	-	-	TIER 3
2 BDR Non-Ocean View	6/4	-	-	-	TIER 4
2021 WEEKS					1-53
2022 WEEKS					1-52

Check-in day for weekly occupancy. Any day. Check-in at Riviera Beach Resort.



Desert Isle of Palm Springs

2555 East Palm Canyon Drive, Palm Springs, California 92264, United States, +1.760.327.8469

Accommodation	Occupancy	Low Season	Mid Season	High Season	Peak Season
1 BDR	4/4	-	-	-	TIER 3
2 BDR	6/6	-	-	-	TIER 4
2 BDR Townhouse	6/4	-	-	-	TIER 4
2021 WEEKS					1-53
2022 WEEKS					1-52

Check-in day for weekly occupancy: Friday. No elevator.



Marquis Villas Resort

140 South Calle Encilia, Palm Springs California 92262, United States, +1.760.322.2263

Accommodation	Occupancy	Low Season	Mid Season	High Season	Peak Season
1 BDR	4/2	TIER 1	TIER 2	TIER 3	TIER 4
1 BDR Pool View	4/2	TIER 1	TIER 2	TIER 3	TIER 4
2 BDR	6/4	TIER 3	TIER 4	TIER 4	TIER 5
2021 WEEKS		28-33, 48-50	23-27, 44-47	18-22, 34-43	1-17, 51-53
2022 WEEKS		28-33, 47, 49-50	23-27, 44-46, 48	18-22, 34-43	1-17, 51-52

Check-in day for weekly occupancy. Any day.



Palm Canyon Resort

2800 South Palm Canyon Drive, Palm Springs, California 92264, United States, +1.760.866.1800

Accommodation	Occupancy	Low Season	Mid Season	High Season	Peak Season
Junior Villa	2/2	-	TIER 2	TIER 3	TIER 3
Junior Villa	4/2	-	TIER 2	TIER 3	TIER 3
1 BDR	4/2	-	TIER 3	TIER 3	TIER 4
2 BDR (1 Bath)	6/4	-	TIER 3	TIER 4	TIER 4
3 BDR	10/6	-	TIER 5	TIER 6	TIER 6
2021 WEEKS			21-46	8-20	1-7, 47-53
2022 WEEKS			21-46	8-20	1-7, 47-52

Check-in day for weekly occupancy: Any day.



Riviera Oaks Resort & Racquet Club

25382 Pappas Road, Ramona, California 92065, United States, +1.760.788.7711

Accommodation	Occupancy	Low Season	Mid Season	High Season	Peak Season
1 BDR	4/4	-	-	TIER 3	TIER 3
2 BDR	6/4	-	-	TIER 3	TIER 4
2021 WEEKS		-	-	1-6, 8-13, 15-21, 39-47, 49-50	7, 14, 22-38, 48, 51-53
2022 WEEKS		-	-	1-6, 8-14, 16-20, 22, 39-46, 48-50	7, 15, 21, 23-38, 47, 51-52

Check-in day for weekly occupancy: Any day. No elevator.



Lake Tahoe Vacation Resort

901 Ski Run Boulevard, South Lake Tahoe, California 96150, United States, +1.530.541.6122

Accommodation	Occupancy	Low Season	Mid Season	High Season	Peak Season
Studio	2/2	TIER 1	TIER 1	TIER 1	TIER 1
Studio	4/4	TIER 1	TIER 1	TIER 1	TIER 1
1 BDR	4/2	TIER 2	TIER 2	TIER 3	TIER 4
2 BDR	6/4	TIER 3	TIER 4	TIER 4	TIER 5
2 BDR	8/6	TIER 3	TIER 4	TIER 4	TIER 5
2021 WEEKS		17-20, 40-46	21-23, 37-39, 47, 49-50	1-12, 15-16	13-14, 24-36, 48, 51-53
2022 WEEKS		17-20, 40-46	21-23, 37-39, 48-50	1-13, 16	14-15, 24-36, 47, 51-52

Check-in day for weekly occupancy: Any day.



Tahoe Beach and Ski Club

3601 Lake Tahoe Boulevard, South Lake Tahoe, California 96150, United States, +1.530.541.6220

Accommodation	Occupancy	Low Season	Mid Season	High Season	Peak Season
Studio	2/2	TIER 1	TIER 1	TIER 1	TIER 1
1 BDR	4/2	TIER 2	TIER 2	TIER 3	TIER 4
1 BDR Townhouse	4/2	TIER 2	TIER 2	TIER 3	TIER 4
1 BDR Deluxe	4/2	TIER 2	TIER 2	TIER 3	TIER 4
2 BDR	6/4	TIER 3	TIER 3	TIER 4	TIER 5
2 BDR Cabin	6/6	TIER 3	TIER 4	TIER 4	TIER 5
2021 WEEKS		17-20, 40-46	21-26, 33-39, 47, 49-50	1-12, 15-16, 28-32	13-14, 27, 48, 51-53
2022 WEEKS		17-20, 40-46	21-25, 27, 33-39, 48-50	1-13, 16, 28-32	14-15, 26, 47, 51-52

Check-in day for weekly occupancy: Friday / Saturday.



Tahoe Seasons Resort

3901 Saddle Road, South Lake Tahoe, California 96150, United States, +1.530.541.6700

Accommodation	Occupancy	Low Season	Mid Season	High Season	Peak Season
Junior 1 BDR	4/2	-	-	TIER 2	TIER 2
1 BDR	4/2	-	-	TIER 3	TIER 3
2 BDR	8/4	-	-	TIER 3	TIER 4
2021 WEEKS		-	-	17-20, 38-46, 49-50	1-16, 21-37, 47-48, 51-53
2022 WEEKS		-	-	17-20, 38-46, 49-50	1-16, 21-37, 47-48, 51-52

Check-in day for weekly occupancy: Sunday.

COLORADO



The Historic Crags Lodge

300 Riverside Drive, Estes Park, Colorado 80517, United States, +1.970.586.6066

Accommodation	Occupancy	Low Season	Mid Season	High Season	Peak Season
Studio	4/2	TIER 1	TIER 1	TIER 1	TIER 2
1 BDR	4/2	TIER 1	TIER 2	TIER 2	TIER 3
2 BDR	6/4	TIER 2	TIER 3	TIER 3	TIER 4
2021 WEEKS		12, 15, 17-20, 38-47	16, 21-23	10-11, 48-50	1-9, 13-14, 24-37, 51-53
2022 WEEKS		12-13, 17-20, 38-46, 48	16, 21-23	10-11, 47, 49-50	1-9, 14-15, 24-37, 51-52

Check-in day for weekly occupancy: Any day. Daily resort fee of \$25.00 plus tax applies.

FLORIDA



Mystic Dunes Resort & Golf Club

7600 Mystic Dunes Lane, Celebration, Florida 34747, United States, +1.407.396.1311

Accommodation	Occupancy	Low Season	Mid Season	High Season	Peak Season
1 BDR	4/2	-	TIER 1	TIER 1	TIER 2
1 BDR Standard	4/2	-	TIER 1	TIER 2	TIER 2
1 BDR Deluxe	4/2	-	TIER 2	TIER 2	TIER 3
2 BDR	8/4	-	TIER 3	TIER 4	TIER 4
2 BDR Lockoff	8/6	-	TIER 3	TIER 4	TIER 5
3 BDR Lockoff	12/6	-	TIER 4	TIER 5	TIER 6
2021 WEEKS			1-4, 37-47, 49-50	5-6, 8-12, 15-26, 28-36	7, 13-14, 27, 48, 51-53
2022 WEEKS			1-4, 37-46, 48-50	5-6, 8-13, 16-25, 27-36	7, 14-15, 26, 47, 51-52

Check-in day for weekly occupancy: Any day.



Barefoot'n Resort

2754 Florida Plaza, Kissimmee, Florida 34746, United States, +1.407.589.2127

Accommodation	Occupancy	Low Season	Mid Season	High Season	Peak Season
1 BDR	4/2	-	TIER 2	TIER 2	TIER 3
2 BDR	6/4	-	TIER 2	TIER 3	TIER 4
2021 WEEKS			1-4, 37-47, 49-50	5-6, 8-12, 15-26, 28-36	7, 13-14, 27, 48, 51-53
2022 WEEKS			1-4, 37-46, 48-50	5-6, 8-13, 16-25, 27-36	7, 14-15, 26, 47, 51-52

Check-in day for weekly occupancy: Any day.



Orbit One Vacation Villas

2950 Entry Point Boulevard, Kissimmee, Florida 34747, United States, +1.407.396.0814

Accommodation	Occupancy	Low Season	Mid Season	High Season	Peak Season
2 BDR	6/4	-	TIER 1	TIER 2	TIER 3
2021 WEEKS			1-5, 18-22, 35, 37-46, 49-50	6, 17, 23-25, 28-34, 36, 47-48	7-16, 26-27, 51-53
2022 WEEKS			1-5, 18-22, 36-46, 49-50	6, 17, 23-25, 28-35, 47-48	7-16, 26-27, 51-52

Check-in day for weekly occupancy: Any day.



Daytona Beach Regency

400 North Atlantic Avenue, Daytona Beach, Florida 32118, United States, +1.386.255.0251

Accommodation	Occupancy	Low Season	Mid Season	High Season	Peak Season
Efficiency	2/2	TIER 1	TIER 1	TIER 1	TIER 1
1 BDR	4/2	TIER 1	TIER 2	TIER 2	TIER 3
1 BDR Premium	4/2	TIER 2	TIER 3	TIER 3	TIER 4
1 BDR Junior Suite	4/2	TIER 3	TIER 3	TIER 4	TIER 5
1 BDR Presidential Suite	4/2	TIER 3	TIER 4	TIER 4	TIER 5
2 BDR	6/4	TIER 2	TIER 3	TIER 3	TIER 4
2021 WEEKS		1-4, 43-47, 49-50	18-19, 35, 37-41	5, 7-9, 11-17, 20-21, 48	6, 10, 22-34, 36, 42, 51-53
2022 WEEKS		1-4, 43-46, 48-50	18-19, 36-41	5, 7-9, 11-17, 20, 22, 47	6, 10, 21, 23-35, 42, 51-52

Check-in day for weekly occupancy: Any day.



Parkway International Resort

6200 Safari Trail, Kissimmee, Florida 34747, United States, +1.407.396.6600

Accommodation	Occupancy	Low Season	Mid Season	High Season	Peak Season
2 BDR	6/4	-	TIER 1	TIER 2	TIER 3
2021 WEEKS			1-5, 18-22, 35, 37-46, 49-50	6, 17, 23-25, 28-34, 36, 47-48	7-16, 26-27, 51-53
2022 WEEKS			1-5, 18-22, 36-46, 49-50	6, 17, 23-25, 28-35, 47-48	7-16, 26-27, 51-52

Check-in day for weekly occupancy: Any day.



Polynesian Isles Resort

3045 Polynesian Isles Boulevard, Kissimmee, Florida 34746, United States, +1.407.396.1622

Accommodation	Occupancy	Low Season	Mid Season	High Season	Peak Season
1 BDR - Phase I	4/2	-	TIER 1	TIER 1	TIER 2
2 BDR	6/4	-	TIER 1	TIER 2	TIER 3
2021 WEEKS			1-4, 37-47, 49-50	5-6, 8-12, 15-26, 28-36	7, 13-14, 27, 48, 51-53
2022 WEEKS			1-4, 37-46, 48-50	5-6, 8-13, 16-25, 27-36	7, 14-15, 26, 47, 51-52

Check-in day for weekly occupancy: Any day.



Crescent Resort on South Beach

1420 Ocean Drive, Miami Beach, Florida 33139, United States, +1.305.531.5197

Accommodation	Occupancy	Low Season	Mid Season	High Season	Peak Season
1 BDR	4/4	TIER 1	TIER 2	TIER 2	TIER 3
1 BDR Deluxe	4/4	TIER 2	TIER 2	TIER 3	TIER 4
2 BDR	6/6	TIER 2	TIER 3	TIER 4	TIER 5
2021 WEEKS		26, 28-40	18-25, 27, 41-46, 49-50	1-4, 17, 47, 51	5-16, 48, 52-53
2022 WEEKS		27-40	18-26, 41-46, 49-50	1-4, 17, 48, 51	5-16, 47, 52

Check-in day for weekly occupancy: Any day.



Charter Club Resort of Naples Bay

1000 10th Avenue South, Naples, Florida 34102, United States, +1.239.261.5559

Accommodation	Occupancy	Low Season	Mid Season	High Season	Peak Season
2 BDR	6/4	TIER 1	TIER 2	TIER 3	TIER 3
2021 WEEKS		37-39, 49-50	17-25, 40-48	26-36	1-16, 51-53
2022 WEEKS		37-39, 49-50	17-25, 40-48	26-36	1-16, 51-52

Check-in day for weekly occupancy: Any day.



Bryan's Spanish Cove

13875 State Road 535, Orlando, Florida 32821, United States, +1.407.239.4222

Accommodation	Occupancy	Low Season	Mid Season	High Season	Peak Season
2 BDR	6/4	-	TIER 1	TIER 2	TIER 3
2021 WEEKS			1-5, 18-22, 35, 37-46, 49-50	6, 17, 23-25, 28-34, 36, 47-48	7-16, 26-27, 51-53
2022 WEEKS			1-5, 18-22, 36-46, 49-50	6, 17, 23-25, 28-35, 47-48	7-16, 26-27, 51-52

Check-in day for weekly occupancy: Any day. No elevator.

Cypress Pointe Resort

8651 Treasure Cay Lane, Orlando, Florida 32836, United States, +1.407.597.2700

Accommodation	Occupancy	Low Season	Mid Season	High Season	Peak Season
Studio	2/2	-	TIER 1	TIER 1	TIER 1
2 BDR	6/4	-	TIER 1	TIER 2	TIER 3
3 BDR	8/6	-	TIER 2	TIER 3	TIER 4
2021 WEEKS			1-4, 37-47, 49-50	5-6, 8-12, 15-26, 28-36	7, 13-14, 27, 48, 51-53
2022 WEEKS			1-4, 37-46, 48-50	5-6, 8-13, 16-25, 27-36	7, 14-15, 26, 47, 51-52

Check-in day for weekly occupancy: Any day. No elevator.

Grand Beach Resort

8317 Lake Bryan Beach Boulevard, Orlando, Florida 32821, United States, +1.407.238.2500

Accommodation	Occupancy	Low Season	Mid Season	High Season	Peak Season
1 BDR - Phase II	4/2	-	TIER 1	TIER 2	TIER 3
2 BDR - Phase II	6/4	-	TIER 2	TIER 3	TIER 4
3 BDR - Phase I	8/6	-	TIER 4	TIER 4	TIER 5
3 BDR - Phase II	10/6	-	TIER 4	TIER 4	TIER 5
2021 WEEKS			1-4, 37-47, 49-50	5-6, 8-12, 15-26, 28-36	7, 13-14, 27, 48, 51-53
2022 WEEKS			1-4, 37-46, 48-50	5-6, 8-13, 16-25, 27-36	7, 14-15, 26, 47, 51-52

Check-in day for weekly occupancy: Any day.

Grande Villas Resort

12118 Turtle Cay Circle, Orlando, Florida 32836, United States, +1.407.238.2300

Accommodation	Occupancy	Low Season	Mid Season	High Season	Peak Season
1 BDR	4/2	-	TIER 1	TIER 1	TIER 2
2 BDR	6/4	-	TIER 2	TIER 3	TIER 4
3 BDR	8/6	-	TIER 3	TIER 4	TIER 5
2021 WEEKS			1-4, 37-47, 49-50	5-6, 8-12, 15-26, 28-36	7, 13-14, 27, 48, 51-53
2022 WEEKS			1-4, 37-46, 48-50	5-6, 8-13, 16-25, 27-36	7, 14-15, 26, 47, 51-52

Check-in day for weekly occupancy: Any day.

The Cove on Ormond Beach

145 South Atlantic Avenue, Ormond Beach, Florida 32176, United States, +1.386.677.1446

Accommodation	Occupancy	Low Season	Mid Season	High Season	Peak Season
Studio North Tower	4/2	TIER 1	TIER 1	TIER 1	TIER 1
Studio South Tower	2/2	TIER 1	TIER 1	TIER 1	TIER 1
1 BDR North Tower	4/4	TIER 1	TIER 1	TIER 1	TIER 2
1 BDR South Tower	4/4	TIER 1	TIER 1	TIER 1	TIER 2
2 BDR North Tower	6/6	TIER 1	TIER 2	TIER 2	TIER 3
2 BDR South Tower	6/6	TIER 1	TIER 2	TIER 3	TIER 4
2 BDR Lockoff South Tower	6/6	TIER 1	TIER 2	TIER 3	TIER 4
2021 WEEKS		1-4, 37-40, 43-45, 49-50	18-23, 35-36, 46-48	17, 24-25, 28-34, 41	5-16, 26-27, 42, 51-53
2022 WEEKS		1-4, 37-40, 43-45, 49-50	18-23, 35-36, 46-48	17, 24-25, 28-34, 41	5-16, 26-27, 42, 51-52

Check-in day for weekly occupancy: Any day.



Liki Tiki Village

17777 Bali Boulevard, Winter Garden, Florida 34787, United States, +1.407.239.5000

Accommodation	Occupancy	Low Season	Mid Season	High Season	Peak Season
1 BDR Economy	4/2	-	TIER 1	TIER 1	TIER 2
1 BDR Standard	4/4	-	TIER 1	TIER 1	TIER 2
1 BDR Deluxe	4/4	-	TIER 1	TIER 2	TIER 3
2 BDR Economy	6/4	-	TIER 2	TIER 2	TIER 3
2 BDR Standard	6/6	-	TIER 2	TIER 3	TIER 3
2 BDR Deluxe	8/6	-	TIER 2	TIER 3	TIER 4
3 BDR	10/10	-	TIER 3	TIER 4	TIER 5
2021 WEEKS			1-5, 18-22, 35, 37-46, 49-50	6, 17, 23-25, 28-34, 36, 47-48	7-16, 26-27, 51-53
2022 WEEKS			1-5, 18-22, 36-46, 49-50	6, 17, 23-25, 28-35, 47-48	7-16, 26-27, 51-52

Check-in day for weekly occupancy: Any day.



Alhambra Villas

500 Cypress Parkway, Kissimmee, Florida 34759, United States, +1.407.933.0700

Accommodation	Occupancy	Low Season	Mid Season	High Season	Peak Season
Efficiency	2/2	TIER 1	TIER 1	TIER 2	TIER 2
1 BDR	4/4	TIER 1	TIER 1	TIER 2	TIER 2
2 BDR Lockoff	6/6	TIER 2	TIER 2	TIER 4	TIER 5
2021 WEEKS		1-4, 33-35, 46, 48-50	5, 12-13, 17-20, 32, 37-45	7-11, 15-16, 21, 23-26, 28-31	6, 14, 22, 27, 36, 47, 51-53
2022 WEEKS		1-4, 33-34, 36, 46, 48-50	5, 12, 16-20, 32, 37-45	7-11, 13-14, 22-25, 27-31	6, 15, 21, 26, 35, 47, 51-52

Check-in day for weekly occupancy: Any day.



Alhambra at Poinciana

500 East Cypress Parkway, Kissimmee, Florida 34759, United States, +1.407.933.0700

Accommodation	Occupancy	Low Season	Mid Season	High Season	Peak Season
Efficiency - Bldg 1	2/2	TIER 1	TIER 1	TIER 2	TIER 2
Efficiency - Bldg 2	2/2	TIER 1	TIER 1	TIER 2	TIER 2
Efficiency - Bldg 3/4	2/2	TIER 1	TIER 1	TIER 2	TIER 2
Efficiency - Bldg 5	2/2	TIER 1	TIER 1	TIER 2	TIER 2
1 BDR - Bldg 1	4/4	TIER 1	TIER 1	TIER 2	TIER 2
1 BDR - Bldg 2	4/4	TIER 1	TIER 1	TIER 2	TIER 2
1 BDR - Bldg 3-4	4/4	TIER 1	TIER 1	TIER 2	TIER 2
1 BDR - Bldg 5	4/4	TIER 1	TIER 1	TIER 2	TIER 2
2 BDR Lockoff - Bldg 1	6/6	TIER 2	TIER 2	TIER 4	TIER 5
2 BDR Lockoff - Bldg 2	6/6	TIER 2	TIER 2	TIER 4	TIER 5
2 BDR Lockoff - Bldg 3-4	6/6	TIER 2	TIER 2	TIER 4	TIER 5
2 BDR Lockoff - Bldg 5	6/6	TIER 2	TIER 2	TIER 4	TIER 5
2021 WEEKS		1-4, 33-35, 46, 48-50	5, 12-13, 17-20, 32, 37-45	7-11, 15-16, 21, 23-26, 28-31	6, 14, 22, 27, 36, 47, 51-53
2022 WEEKS		1-4, 33-34, 36, 46, 48-50	5, 12, 16-20, 32, 37-45	7-11, 13-14, 22-25, 27-31	6, 15, 21, 26, 35, 47, 51-52

Check-in day for weekly occupancy: Any day.

HAWAII



Grand Pacific Resorts at Hanalei Bay Resort

5380 Honoiki Road, Princeville, Kauai, Hawaii 96722, United States, +1.808.826.6522

Accommodation	Occupancy	Low Season	Mid Season	High Season	Peak Season
1 BDR	4/2	-	TIER 3	TIER 4	TIER 5
2 BDR	6/4	-	TIER 4	TIER 5	TIER 5
2021 WEEKS				1-12, 15-26, 28-47, 49-50	13-14, 27, 48, 51-53
2022 WEEKS				18-20, 44-50	9-13, 16-17, 21-25, 34-43

Check-in day for weekly occupancy: Saturday. Daily resort fee tax applies. 1 Bedroom: \$31.99 nightly tax. 2 Bedroom: \$35.17 nightly tax. \$6 and \$25 check-in fee may apply. Mid Season Tier Values only apply to years 2022 and forward.

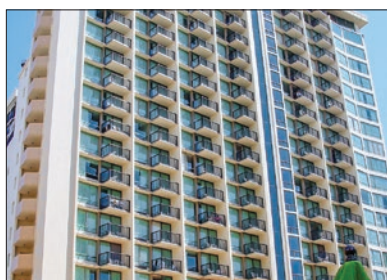


Grand Pacific Resorts at Makai Club Resort

4180 Lei O Papa Road, Princeville, Kauai, Hawaii 96722, United States, +1.808.826.8815

Accommodation	Occupancy	Low Season	Mid Season	High Season	Peak Season
1 BDR	4/2	-	TIER 3	TIER 3	TIER 4
2 BDR	6/4	-	TIER 3	TIER 4	TIER 5
2021 WEEKS				1-12, 15-26, 28-47, 49-50	13-14, 27, 48, 51-53
2022 WEEKS				18-20, 44-50	9-13, 16-17, 21-25, 34-43

Check-in day for weekly occupancy: Friday (1 BDR) and Sunday (2 BDR). Daily resort fee of \$17.89/night plus tax plus tax applies. 1 Bedroom: \$11.45 nightly tax. 2 Bedroom: \$12.46 nightly tax. Mid Season Tier Values only apply to years 2022 and forward.



Imperial Hawaii Vacation Club

205 Lewers Street, Honolulu, Oahu, Hawaii 96815, United States, +1.808.923.1827

Accommodation	Occupancy	Low Season	Mid Season	High Season	Peak Season
1 BDR	4/2	-	TIER 3	TIER 4	TIER 5
2021 WEEKS				1-12, 15-26, 28-47, 49-50	13-14, 27, 48, 51-53
2022 WEEKS				18-20, 44-50	9-13, 16-17, 21-25, 34-43

Check-in day for weekly occupancy: Saturday. Mid Season Tier Values only apply to years 2022 and forward.



Ke Nani Kai Resort

50 Kepuhi Place, Kaluakoi Resort, Molokai, Hawaii 96770, United States, +1.858.679.2016

Accommodation	Occupancy	Low Season	Mid Season	High Season	Peak Season
1 BDR	4/2	-	TIER 3	TIER 3	TIER 4
2 BDR	6/4	-	TIER 4	TIER 4	TIER 5
2021 WEEKS				1-12, 15-26, 28-47, 49-50	13-14, 27, 48, 51-53
2022 WEEKS				18-20, 44-50	9-13, 16-17, 21-25, 34-43

Check-in day for weekly occupancy: Saturday. Mid Season Tier Values only apply to years 2022 and forward.



Lawai Beach Resort

5017 Lawai Road, Koloa, Kauai, Hawaii 96756, United States, +1.808.240.5100

Accommodation	Occupancy	Low Season	Mid Season	High Season	Peak Season
1 BDR	4/2	-	TIER 3	TIER 3	TIER 4
2021 WEEKS				1-12, 15-26, 28-47, 49-50	13-14, 27, 48, 51-53
2022 WEEKS				18-20, 44-50	9-13, 16-17, 21-25, 34-43

Check-in day for weekly occupancy: Friday. No air conditioning. Mid Season Tier Values only apply to years 2022 and forward.



RVC at Kona Reef Resort

75-5888 Alii Drive, Kailua, Kona, Hawaii 96740, United States, +1.808.331.2925

Accommodation	Occupancy	Low Season	Mid Season	High Season	Peak Season
1 BDR	4/2	-	TIER 2	TIER 2	TIER 3
2021 WEEKS			37-47, 49-50	1-12, 15-26, 28-36	13-14, 27, 48, 51-53
2022 WEEKS			18-20, 44-50	9-13, 16-17, 21-25, 34-43	1-8, 14-15, 26-33, 51-52

Check-in day for weekly occupancy: Saturday. Daily resort fee of \$15/Night plus tax plus tax applies.



Kapaa Shore

4-0900 Kuhio Highway, Kapa, Kauai, Hawaii 96746, United States, +1.808.822.3055

Accommodation	Occupancy	Low Season	Mid Season	High Season	Peak Season
1 BDR	4/2	-	TIER 1	TIER 2	TIER 3
2021 WEEKS			37-47, 49-50	1-12, 15-26, 28-36	13-14, 27, 48, 51-53
2022 WEEKS			18-20, 44-50	9-13, 16-17, 21-25, 34-43	1-8, 14-15, 26-33, 51-52

Check-in day for weekly occupancy: Saturday. No elevator. No air conditioning.



Royal Kuhio

2240 Kuhio Avenue, Honolulu, Oahu, Hawaii 96815, United States, +1.808.923.1856

Accommodation	Occupancy	Low Season	Mid Season	High Season	Peak Season
1 BDR	4/2	-	TIER 1	TIER 2	TIER 3
2021 WEEKS				1-12, 15-26, 28-36	13-14, 27, 48, 51-53
2022 WEEKS			18-20, 44-50	9-13, 16-17, 21-25, 34-43	1-8, 14-15, 26-33, 51-52

Check-in day for weekly occupancy: Friday / Saturday. No elevator. No air conditioning. Mid Season Tier Values only apply to years 2022 and forward.



Sea Mountain

Colony I at Sea Mountain, 95-788 Ninole Loop Road, Punalu'u, Kona, Hawaii 96777, United States, +1.808.928.6200

Accommodation	Occupancy	Low Season	Mid Season	High Season	Peak Season
Studio	4/2	-	TIER 1	TIER 2	TIER 3
1 BDR	4/2	-	TIER 1	TIER 2	TIER 3
2021 WEEKS			37-47, 49-50	1-12, 15-26, 28-36	13-14, 27, 48, 51-53
2022 WEEKS			18-20, 44-50	9-13, 16-17, 21-25, 34-43	1-8, 14-15, 26-33, 51-52

Check-in day for weekly occupancy: Friday / Saturday. No elevator. No air conditioning.



Sea Village

75-5992 Alii Drive, Kailua, Kona, Hawaii 96740, United States, +1.808.326.2252

Accommodation	Occupancy	Low Season	Mid Season	High Season	Peak Season
1 BDR	4/2	-	TIER 1	TIER 2	TIER 3
2 BDR	6/4	-	TIER 2	TIER 3	TIER 4
2021 WEEKS			37-47, 49-50	1-12, 15-26, 28-36	13-14, 27, 48, 51-53
2022 WEEKS			18-20, 44-50	9-13, 16-17, 21-25, 34-43	1-8, 14-15, 26-33, 51-52

Check-in day for weekly occupancy: Saturday. No air conditioning.



Valley Isle

4327 Lower Honoapiilani Road, Lahaina, Maui, Hawaii 96761, United States, +1.808.669.4841

Accommodation	Occupancy	Low Season	Mid Season	High Season	Peak Season
1 BDR	4/2	-	TIER 1	TIER 2	TIER 3
2021 WEEKS			37-47, 49-50	1-12, 15-26, 28-36	13-14, 27, 48, 51-53
2022 WEEKS			18-20, 44-50	9-13, 16-17, 21-25, 34-43	1-8, 14-15, 26-33, 51-52

Check-in day for weekly occupancy: Saturday. No air conditioning.



The Point at Poipu

1613 Pe'e Road, Koloa, Kauai, Hawaii 96756, United States, +1.808.742.1888

Accommodation	Occupancy	Low Season	Mid Season	High Season	Peak Season
2 BDR Garden View	6/4	-	-	TIER 4	TIER 5
2 BDR Partial Ocean View	6/4	-	-	TIER 4	TIER 5
2 BDR Ocean View	6/4	-	-	TIER 5	TIER 6
2 BDR Ocean Front	6/4	-	-	TIER 6	TIER 6
3 BDR Presidential Suite	8/6	-	-	TIER 6	TIER 6
2021 WEEKS				1-12, 15-26, 28-47, 49-50	13-14, 27, 48, 51-53
2022 WEEKS				1-13, 16-25, 27-46, 48-50	14-15, 26, 47, 51-52

Check-in day for weekly occupancy: Any day.



Ka'anapali Beach Club

104 Ka'anapali Shores Place, Maui, Hawaii 96761, United States, +1.808.661.2000

Accommodation	Occupancy	Low Season	Mid Season	High Season	Peak Season
1 BDR Scenic View	4/2	-	-	TIER 3	TIER 4
1 BDR Ocean View	4/2	-	-	TIER 4	TIER 5
1 BDR Deluxe Ocean View	4/2	-	-	TIER 5	TIER 6
2 BDR	6/4	-	-	TIER 6	TIER 6
2 BDR Presidential Suite	6/4	-	-	TIER 6	TIER 6
2021 WEEKS				1-12, 15-26, 28-47, 49-50	13-14, 27, 48, 51-53
2022 WEEKS				1-13, 16-25, 27-46, 48-50	14-15, 26, 47, 51-52

Check-in day for weekly occupancy: Any day.



The Modern Honolulu

1775 Ala Moana Boulevard, Honolulu, Oahu, Hawaii 96815, United States, +1.808.943.5800

Accommodation	Occupancy	Low Season	Mid Season	High Season	Peak Season
City Scape View - Hotel Room	2/2 - 2/4	TIER 2	TIER 2	TIER 3	TIER 3
City View - Hotel Room	2/2 - 2/4	TIER 2	TIER 2	TIER 3	TIER 3
Marina View Suite - Hotel Room	3/2	TIER 6	TIER 6	TIER 6	TIER 6
Ocean Front Suite - Hotel Room	4/2	TIER 6	TIER 6	TIER 6	TIER 6
Ocean View - Hotel Room	2/2 - 2/4	TIER 4	TIER 4	TIER 5	TIER 5
Ocean View Suite - Hotel Room	2/2 - 2/3	TIER 6	TIER 6	TIER 6	TIER 6
Partial Ocean View - Hotel Room	2/2 - 2/4	TIER 3	TIER 4	TIER 5	TIER 5
Penthouse - Hotel Room	3/2	TIER 6	TIER 6	TIER 6	TIER 6
Studio Suite - Hotel Room	4/2	TIER 4	TIER 5	TIER 5	TIER 5
2021 WEEKS		9-10, 12, 15, 19, 47, 49-50	11, 13-14, 16-18, 20-22, 43-46, 48	23-26, 34-42, 51	1-8, 27-33, 52-53
2022 WEEKS		9-10, 12-13, 19, 48-50	11, 14-18, 20-22, 43-47	23-25, 27, 34-42, 51	1-8, 26, 28-33, 52

Check-in day for weekly occupancy: Any day.



Grand Pacific at Kauai Beach Villas

4330 Kauai Beach Drive, Lihue, Hawaii 96766, United States, +1.808.241.1000

Accommodation	Occupancy	Low Season	Mid Season	High Season	Peak Season
1 BDR	4/2	-	-	TIER 3	TIER 4
2 BDR	6/4	-	-	TIER 4	TIER 5
2021 WEEKS				1-12, 15-26, 28-47, 49-50	13-14, 27, 48, 51-53
2022 WEEKS				1-13, 16-25, 27-46, 48-50	14-15, 26, 47, 51-52

Check-in day for weekly occupancy: Thursday/Friday/Saturday/Sunday. Daily resort fee of \$20/Night plus tax plus tax applies. 1 Bedroom: \$9.89 nightly tax. 2 Bedroom: \$11.89 nightly tax.

INDIANA



Varsity Clubs of America - South Bend

3800 North Main Street, Mishawaka, Indiana 46545, United States, +1.574.277.0500

Accommodation	Occupancy	Low Season	Mid Season	High Season	Peak Season
Studio	4/2	-	TIER 1	TIER 1	TIER 1
1 BDR	4/2	-	TIER 1	TIER 2	TIER 2
1 BDR Deluxe	4/2	-	TIER 1	TIER 2	TIER 3
2 BDR	6/4	-	TIER 2	TIER 3	TIER 3
2 BDR Deluxe	6/6	-	TIER 2	TIER 3	TIER 4
The Alumni House	6/4	-	TIER 6	TIER 6	TIER 6
2021 WEEKS			1-6, 9-12, 15-16, 46, 48-50	7-8, 13-14, 17-23, 34-36, 39-40, 42-43	24-33, 37-38, 41, 44-45, 47, 51-53
2022 WEEKS			1-6, 9-13, 16, 46-47, 49-50	7-8, 14-15, 17-23, 34-36, 39-40, 42-43	24-33, 37-38, 41, 44-45, 48, 51-52

Check-in day for weekly occupancy: Any day.

MARYLAND



Coconut Malorie

200 59th Street on the Bay, Ocean City, Maryland 21842, United States, +1.800.767.6060

Accommodation	Occupancy	Low Season	Mid Season	High Season	Peak Season
1 BDR	4/2	TIER 1	TIER 1	TIER 2	TIER 3
2021 WEEKS		1-10, 45-50	11-12, 15-18, 41-44	13-14, 19-21, 35, 37-40	22-34, 36, 51-53
2022 WEEKS		1-10, 45-50	11-13, 16-18, 41-44	14-15, 19-20, 22, 36-40	21, 23-35, 51-52

Check-in day for weekly occupancy: Friday.

MISSOURI



The Suites at Fall Creek

1 Fall Creek Drive, Branson, Missouri 65616, United States, +1.417.336.3611

Accommodation	Occupancy	Low Season	Mid Season	High Season	Peak Season
Studio	2/2	TIER 1	TIER 1	TIER 1	TIER 2
1 BDR	4/4	TIER 1	TIER 1	TIER 2	TIER 2
2 BDR	6/6	TIER 1	TIER 2	TIER 2	TIER 3
2 BDR Deluxe	6/6	TIER 2	TIER 2	TIER 3	TIER 4
2021 WEEKS		1-8	9-12, 15-16, 47, 49-50	17-26, 28-46	13-14, 27, 48, 51-53
2022 WEEKS		1-8	9-13, 16, 48-50	17-25, 27-46	14-15, 26, 47, 51-52

Check-in day for weekly occupancy: Any day.

NEVADA



Cancún Resort Las Vegas

8335 Las Vegas Boulevard South, Las Vegas, Nevada 89123, United States, +1.702.614.6200

Accommodation	Occupancy	Low Season	Mid Season	High Season	Peak Season
1 BDR	4/4	-	-	-	TIER 3
2 BDR	6/4	-	-	-	TIER 4
Penthouse Villa	6/4	-	-	-	TIER 6
2021 WEEKS					1-53
2022 WEEKS					1-52

Check-in day for weekly occupancy: Any day.

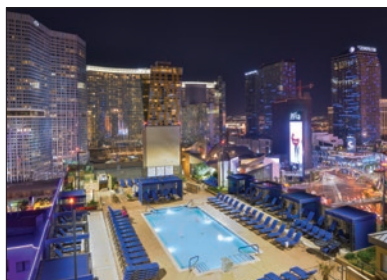


Desert Paradise Resort

5165 South Decatur Boulevard, Las Vegas, Nevada 89118, United States, +1.702.579.3600

Accommodation	Occupancy	Low Season	Mid Season	High Season	Peak Season
1 BDR	4/2	TIER 1	TIER 2	TIER 3	TIER 4
2 BDR	6/4	TIER 2	TIER 3	TIER 4	TIER 4
2021 WEEKS		45-46, 49-50	3-6, 8	23-35, 47	1-2, 7, 9-22, 36-44, 48, 51-53
2022 WEEKS		45-46, 49-50	3-6, 8	23-34, 36, 48	1-2, 7, 9-22, 35, 37-44, 47, 51-52

Check-in day for weekly occupancy: Any day.



Polo Towers Suites

3745 Las Vegas Boulevard South, Las Vegas, Nevada 89109, United States, +1.702.261.1000

Accommodation	Occupancy	Low Season	Mid Season	High Season	Peak Season
Studio Efficiency	2/2	-	-	TIER 2	TIER 3
1 BDR Suite	4/4	-	-	TIER 4	TIER 5
2 BDR Suite	6/6	-	-	TIER 5	TIER 5
2021 WEEKS				2-6, 8-12, 15-21, 23-26, 28-43, 45-47, 49-51	1, 7, 13-14, 22, 27, 44, 48, 52-53
2022 WEEKS				2-6, 8-13, 16-20, 22-25, 27-43, 45-46, 48-51	1, 7, 14-15, 21, 26, 44, 47, 52

Check-in day for weekly occupancy: Any day.



Polo Towers Villas

3745 Las Vegas Boulevard South, Las Vegas, Nevada 89109, United States, +1.702.261.1000

Accommodation	Occupancy	Low Season	Mid Season	High Season	Peak Season
Studio Efficiency	2/2	-	-	TIER 3	TIER 4
1 BDR Villa	4/4	-	-	TIER 4	TIER 5
2 BDR Villa	6/6	-	-	TIER 5	TIER 6
2021 WEEKS				2-6, 8-12, 15-21, 23-26, 28-43, 45-47, 49-51	1, 7, 13-14, 22, 27, 44, 48, 52-53
2022 WEEKS				2-6, 8-13, 16-20, 22-25, 27-43, 45-46, 48-51	1, 7, 14-15, 21, 26, 44, 47, 52

Check-in day for weekly occupancy: Any day.



The Carriage House

105 East Harmon Avenue, Las Vegas, Nevada 89109, United States, +1.702.798.1020

Accommodation	Occupancy	Low Season	Mid Season	High Season	Peak Season
Studio	2/2	-	-	TIER 1	TIER 1
1 BDR	4/2	-	-	TIER 2	TIER 2
2 BDR	6/4	-	-	TIER 3	TIER 3
2021 WEEKS				1-12, 15-26, 28-47, 49-51	13-14, 27, 48, 52-53
2022 WEEKS				1-13, 16-25, 27-46, 48-51	14-15, 26, 47, 52

Check-in day for weekly occupancy: Friday / Saturday / Sunday.



The Ridge Pointe

455 Tramway Drive, Stateline, Nevada 89449, United States, +1.775.588.3553

Accommodation	Occupancy	Low Season	Mid Season	High Season	Peak Season
Studio	2/2	TIER 1	TIER 2	TIER 2	TIER 3
1 BDR	4/2	TIER 1	TIER 2	TIER 3	TIER 4
2 BDR	6/4	TIER 2	TIER 3	TIER 4	TIER 5
2021 WEEKS		17-20, 40-46	21-26, 33-39, 47, 49-50	1-12, 15-16, 28-32	13-14, 27, 48, 51-53
2022 WEEKS		17-20, 40-46	21-25, 27, 33-39, 48-50	1-13, 16, 28-32	14-15, 26, 47, 51-52

Check-in day for weekly occupancy: Friday / Saturday. No air conditioning. Check-in at Ridge View, 400 Ridge Club Drive, Stateline, Nevada 89449.



Kingsbury of Tahoe

335 Tramway Drive, Stateline, Nevada 89449, United States, +1.775.588.4749

Accommodation	Occupancy	Low Season	Mid Season	High Season	Peak Season
2 BDR	6/4	TIER 2	TIER 3	TIER 4	TIER 5
2021 WEEKS		17-20, 40-46	21-26, 33-39, 47, 49-50	1-12, 15-16, 28-32	13-14, 27, 48, 51-53
2022 WEEKS		17-20, 40-46	21-25, 27, 33-39, 48-50	1-13, 16, 28-32	14-15, 26, 47, 51-52

Check-in day for weekly occupancy: Saturday. No air conditioning.

NEW MEXICO



Villas de Santa Fe

400 Griffin Street, Santa Fe, New Mexico 87501, United States, +1.505.988.3000

Accommodation	Occupancy	Low Season	Mid Season	High Season	Peak Season
1 BDR	4/2	-	TIER 1	TIER 2	TIER 3
1 BDR Deluxe	4/2	-	TIER 2	TIER 2	TIER 3
2 BDR	8/4	-	TIER 2	TIER 3	TIER 4
2021 WEEKS			1-6, 47, 49-50	7-12, 15-26, 28-46	13-14, 27, 48, 51-53
2022 WEEKS			1-6, 48-50	7-13, 16-25, 27-46	14-15, 26, 47, 51-52

Check-in day for weekly occupancy: Any day.

NORTH CAROLINA



Peppertree Atlantic Beach

715 West Fort Macon Road, Atlantic Beach, North Carolina 28512, United States, +1.252.247.5841

Accommodation	Occupancy	Low Season	Mid Season	High Season	Peak Season
1 BDR	4/2	TIER 1	TIER 2	TIER 2	TIER 3
2 BDR	6/4	TIER 2	TIER 2	TIER 3	TIER 4
2021 WEEKS		1-7, 45-50	8-12, 41-44	13-20, 35-40	21-34, 51-53
2022 WEEKS		1-7, 45-50	8-12, 41-44	13-20, 35-40	21-34, 51-52

Check-in day for weekly occupancy: Saturday.



Beachwoods Resort

1 Cypress Knee Trail, Kitty Hawk, North Carolina 27949, United States, +1.252.211.4610

Accommodation	Occupancy	Low Season	Mid Season	High Season	Peak Season
1 BDR	4/2	TIER 1	TIER 1	TIER 2	TIER 2
1 BDR with Open Loft	6/4	TIER 1	TIER 2	TIER 4	TIER 5
2 BDR Lockoff	8/4	TIER 1	TIER 2	TIER 4	TIER 5
3 BDR	8/6	TIER 1	TIER 4	TIER 5	TIER 6
2 BDR with Open Loft	10/6	TIER 2	TIER 4	TIER 5	TIER 6
3 BDR with Open Loft	10/8	TIER 2	TIER 4	TIER 6	TIER 6
2021 WEEKS		1-11, 47, 49-50	12-19, 44-46, 51-53	20-25, 35-43, 48	26-34
2022 WEEKS		1-11, 48-50	12-19, 44-46, 51-52	20-25, 35-43, 47	26-34

Check-in day for weekly occupancy: Any day.



Fairway Forest Resort

3077 U.S. Highway 64 E, Suite A, Sapphire, North Carolina 28774, United States, +1.828.743.3956

Accommodation	Occupancy	Low Season	Mid Season	High Season	Peak Season
1 BDR Standard	2/2	-	TIER 1	TIER 1	TIER 2
1 BDR Deluxe	4/2	-	TIER 1	TIER 2	TIER 2
2 BDR Standard	6/4	-	TIER 2	TIER 3	TIER 4
2 BDR Lockoff	6/4	-	TIER 2	TIER 3	TIER 5
2021 WEEKS			4-11, 46-50	1-3, 12-17, 44-45	18-43, 51-53
2022 WEEKS			4-11, 46-50	1-3, 12-17, 44-45	18-43, 51-52

Check-in day for weekly occupancy: Any day.

SOUTH CAROLINA



Church Street Inn

177 Church Street, Charleston, South Carolina 29401, United States, +1.843.722.3420

Accommodation	Occupancy	Low Season	Mid Season	High Season	Peak Season
1 BDR	4/2	-	TIER 1	TIER 2	TIER 3
2021 WEEKS			1-12, 15-21, 37-47, 49-50	22-26, 28-36	13-14, 27, 48, 51-53
2022 WEEKS			1-13, 16-20, 22, 37-46, 48-50	21, 23-25, 27-36	14-15, 26, 47, 51-52

Check-in day for weekly occupancy: Sunday.



Peppertree Ocean Beach Club

1908 North Ocean Boulevard, North Myrtle Beach, South Carolina 29582, United States, +1.843.249.1421

Accommodation	Occupancy	Low Season	Mid Season	High Season	Peak Season
1 BDR	4/2	TIER 1	TIER 2	TIER 2	TIER 3
2 BDR	6/4	TIER 1	TIER 2	TIER 2	TIER 3
2021 WEEKS		1-6, 47, 49-50	7-12, 15, 40-46, 48	13-14, 16-21, 35-39	22-34, 51-53
2022 WEEKS		1-6, 48-50	7-13, 40-47	14-20, 22, 35-39	21, 23-34, 51-52

Check-in day for weekly occupancy: Saturday.



Island Links Resort

1 Coggins Point Road, Hilton Head Island, South Carolina 29928, United States, +1.843.681.3582

Accommodation	Occupancy	Low Season	Mid Season	High Season	Peak Season
2 BDR	6/4	TIER 2	TIER 3	TIER 4	TIER 5
2021 WEEKS		1-4, 49-50	5-12, 45-48	16-20, 36-44	13-15, 21-35, 51-53
2022 WEEKS		1-4, 49-50	5-12, 45-48	16-20, 36-44	13-15, 21-35, 51-52

Check-in day for weekly occupancy: Any day.



Royal Dunes

8 Wimbledon Court, Hilton Head Island, South Carolina 29928, United States, +1.843.681.9718

Accommodation	Occupancy	Low Season	Mid Season	High Season	Peak Season
3 BDR	8/6	TIER 1	TIER 3	TIER 4	TIER 5
2021 WEEKS		1-8, 47, 49-50	9-12, 15-21, 37-46	22-26, 28-36	13-14, 27, 48, 51-53
2022 WEEKS		1-8, 48-50	9-13, 16-20, 22, 37-46	21, 23-25, 27-36	14-15, 26, 47, 51-52

Check-in day for weekly occupancy: Any day.



Dunes Village Resort

5200 North Ocean Boulevard, Myrtle Beach, South Carolina 29577, United States, +1.843.449.5275

Accommodation	Occupancy	Low Season	Mid Season	High Season	Peak Season
Double Studio Oceanfront Deluxe	4/2	TIER 1	TIER 1	TIER 2	TIER 3
1 BDR Angle Oceanfront Queen Suite 8/2		TIER 1	TIER 2	TIER 2	TIER 3
2 BDR Angle Oceanfront Deluxe	8/4	TIER 2	TIER 2	TIER 3	TIER 4
2 BDR Condo Oceanfront Deluxe	8/4	TIER 2	TIER 3	TIER 4	TIER 4
3 BDR Angle Oceanfront Deluxe	10/6	TIER 2	TIER 3	TIER 4	TIER 5
3 BDR Condo Oceanfront	12/6	TIER 3	TIER 4	TIER 4	TIER 5
4 BDR Condo Oceanfront	12/8	TIER 4	TIER 4	TIER 5	TIER 5
2021 WEEKS		1-6, 46, 49-53	7-12, 15, 40-45, 47-48	13-14, 16-21, 34-35, 37-39	22-33, 36
2022 WEEKS		1-6, 46, 49-52	7-13, 40-45, 47-48	14-20, 22, 34, 36-39	21, 23-33, 35

Check-in day for weekly occupancy: Friday.



Sandcastle South Resort

2207 South Ocean Blvd, Myrtle Beach, South Carolina 29577, United States, +1.843.213.5980

Accommodation	Occupancy	Low Season	Mid Season	High Season	Peak Season
Studio	2/2	TIER 1	TIER 1	TIER 1	TIER 1
1 BDR	4/2	TIER 1	TIER 1	TIER 1	TIER 2
2021 WEEKS		1-8, 47, 49-50	9-12, 15-21, 37-46	22-26, 28-36	13-14, 27, 48, 51-53
2022 WEEKS		1-8, 48-50	9-13, 16-20, 22, 37-46	21, 23-25, 27-36	14-15, 26, 47, 51-52

Check-in day for weekly occupancy: Saturday. Guests must contact resort if arriving late or on a day other than what is listed on confirmation.



Sandpebble Beach Club

1011 S. Ocean Blvd, Surfside Beach, South Carolina 29575, United States, +1.843.232.0565

Accommodation	Occupancy	Low Season	Mid Season	High Season	Peak Season
2 BDR	6/4	TIER 1	TIER 1	TIER 2	TIER 2
2021 WEEKS		1-8, 47, 49-50	9-12, 15-21, 37-46	22-26, 28-36	13-14, 27, 48, 51-53
2022 WEEKS		1-8, 48-50	9-13, 16-20, 22, 37-46	21, 23-25, 27-36	14-15, 26, 47, 51-52

Check-in day for weekly occupancy: Saturday. Front Desk open 8am-6pm. Check-in arriving after hours should contact the front desk prior to arrival for instructions. Resort has strict policy of 2 cars per unit.



Sea Mystique

410 N. Waccamaw Drive, Murrells Inlet, South Carolina 29576, United States, +1.843.232.0565

Accommodation	Occupancy	Low Season	Mid Season	High Season	Peak Season
2 BDR	6/4	TIER 1	TIER 1	TIER 2	TIER 2
2021 WEEKS		1-8, 47, 49-50	9-12, 15-21, 37-46	22-26, 28-36	13-14, 27, 48, 51-53
2022 WEEKS		1-8, 48-50	9-13, 16-20, 22, 37-46	21, 23-25, 27-36	14-15, 26, 47, 51-52

Check-in day for weekly occupancy: Saturday. Check-in located at off-site address at Sandpebble Beach Resort: 1011 South Ocean Blvd, Surfside Beach, SC 29575. Late arrivals must contact the resort prior to check-in for arrival instructions. Resort has a strict policy of one (1) car per unit.

TENNESSEE



Bent Creek Golf Village

3919 East Parkway, Gatlinburg, Tennessee 37738, United States, +1.865.436.2875

Accommodation	Occupancy	Low Season	Mid Season	High Season	Peak Season
1 BDR	4/4	TIER 1	TIER 1	TIER 2	TIER 2
2 BDR	8/8	TIER 1	TIER 2	TIER 2	TIER 3
2 BDR - Cabin	6/6	TIER 1	TIER 2	TIER 3	TIER 4
2021 WEEKS		1-12, 44-47, 49-50	15-21, 38-43	22-26, 28-37	13-14, 27, 48, 51-53
2022 WEEKS		1-12, 44-46, 48-50	13, 16-20, 22, 38-43	21, 23-25, 27-37	14-15, 26, 47, 51-52

Check-in day for weekly occupancy: Any day.



Sunrise Ridge Resort

2301 Ridge Road, Pigeon Forge, Tennessee 37863, United States, +1.865.908.6040

Accommodation	Occupancy	Low Season	Mid Season	High Season	Peak Season
1 BDR Standard	4/2	TIER 1	TIER 1	TIER 2	TIER 2
1 BDR Standard - Mountain View	4/2	TIER 1	TIER 1	TIER 2	TIER 3
1 BDR Deluxe	4/2	TIER 1	TIER 1	TIER 2	TIER 3
1 BDR Deluxe - Mountain View	4/2	TIER 1	TIER 1	TIER 2	TIER 4
2 BDR	6/4	TIER 1	TIER 1	TIER 3	TIER 4
2 BDR - Mountain View	6/4	TIER 1	TIER 2	TIER 4	TIER 5
2 BDR Pedestal Duplex	6/4	TIER 1	TIER 2	TIER 4	TIER 5
2 BDR Pedestal Cottage Open Loft	6/4	TIER 1	TIER 2	TIER 4	TIER 5
2021 WEEKS		1-6, 8	7, 9-11, 50	12, 15-20, 23-26, 29-35, 38-45, 49	13-14, 21-22, 27-28, 36-37, 46-48, 51-53
2022 WEEKS		1-6, 8	7, 9-11, 50	12-13, 16-20, 23-25, 27, 29-34, 36, 38-45, 49	14-15, 21-22, 26, 28, 35, 37, 46-48, 51-52

Check-in day for weekly occupancy: Any day.

UTAH



RVC's The Miner Club

4070 North Willow Draw, Park City, Utah 84098, United States, +1.435.645.4400

Accommodation	Occupancy	Low Season	Mid Season	High Season	Peak Season
2 BDR	6/4	TIER 1	TIER 1	TIER 2	TIER 3
3 BDR	8/6	TIER 1	TIER 2	TIER 3	TIER 4
4 BDR	10/8	TIER 2	TIER 3	TIER 5	TIER 5
2021 WEEKS		42-45	17-18, 40-41, 46	1-12, 15-16, 19-26, 28-39, 47, 49-50	13-14, 27, 48, 51-53
2022 WEEKS		42-45	17-18, 40-41, 46	1-13, 16, 19-25, 27-39, 48-50	14-15, 26, 47, 51-52

Check-in day for weekly occupancy: Saturday. Daily resort fee of \$17 for 2 Bedroom, \$20 for 3 Bedroom and \$23 for 4 bedroom applies. Local taxes, parking and/or housekeeping fees may apply, payable to the resort. There is a per person, per night penalty for exceeding the maximum occupancy.



Cedar Breaks Lodge & Spa

223 Hunter Ridge Road, Brian Head, Utah 84719, United States, +1.435.677.3000

Accommodation	Occupancy	Low Season	Mid Season	High Season	Peak Season
Junior Villa	2/2	-	-	TIER 2	TIER 2
Junior Villa	4/2	-	-	TIER 2	TIER 2
1 BDR	4/2	-	-	TIER 2	TIER 3
1 BDR Grand	4/2	-	-	TIER 3	TIER 3
2 BDR	6/4	-	-	TIER 3	TIER 4
2 BDR Grand	8/4	-	-	TIER 3	TIER 4
2021 WEEKS				12, 15-21, 35, 37-45	1-11, 13-14, 22-34, 36, 46-53
2022 WEEKS				12-13, 16-20, 22, 36-45	1-11, 14-15, 21, 23-35, 46-52

Check-in day for weekly occupancy: Any day. No air conditioning.



Park Plaza Resort

2060 Sidewinder Drive, Park City, Utah 84060, United States, +1.435.649.0870

Accommodation	Occupancy	Low Season	Mid Season	High Season	Peak Season
Studio	2/2	TIER 1	TIER 1	TIER 1	TIER 2
1 BDR	4/2	TIER 1	TIER 1	TIER 2	TIER 2
2 BDR	6/4	TIER 1	TIER 2	TIER 3	TIER 3
2021 WEEKS		42-45	17-18, 40-41, 46	1-12, 15-16, 19-26, 28-39, 47, 49-50	13-14, 27, 48, 51-53
2022 WEEKS		42-45	17-18, 40-41, 46	1-13, 16, 19-25, 27-39, 48-50	14-15, 26, 47, 51-52

Check-in day for weekly occupancy: Saturday. Studios & Mini Studios \$15 per day; 1 & 2 Bedrooms: \$20 per day. Guests must contact resort if arriving late or on a day other than what is listed on confirmation.

VIRGINIA

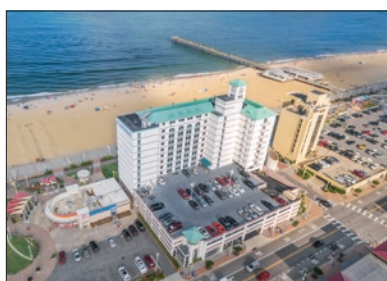


Beach Quarters Resort

501 Atlantic Avenue, Virginia Beach, Virginia 23451, United States, +1.757.422.3186

Accommodation	Occupancy	Low Season	Mid Season	High Season	Peak Season
Ocean Front Studio	2/2	TIER 1	TIER 1	TIER 1	TIER 1
1 BDR - Ocean Front - Max 4	4/2	TIER 1	TIER 1	TIER 1	TIER 1
1 BDR - Ocean Front - Max 6	6/2	TIER 1	TIER 1	TIER 1	TIER 2
2 BDR - Ocean Front Lockoff	8/4	TIER 2	TIER 2	TIER 2	TIER 3
2021 WEEKS		1-8, 47, 49-50	9-12, 44-46, 48	13-20, 22-23, 33-35, 37-43, 51-53	21, 24-32, 36
2022 WEEKS		1-8, 48-50	9-12, 44-47	13-21, 23, 33-34, 36-43, 51-52	22, 24-32, 35

Check-in day for weekly occupancy: Any day.



Boardwalk Resort and Villas

1601 Atlantic Avenue, Virginia Beach, Virginia 23451, United States, +1.757.213.3099

Accommodation	Occupancy	Low Season	Mid Season	High Season	Peak Season
Studio - City View	2/2	TIER 1	TIER 1	TIER 1	TIER 1
Deluxe Studio - Ocean View	2/2	TIER 1	TIER 1	TIER 1	TIER 2
1 BDR - City View	4/2	TIER 1	TIER 1	TIER 2	TIER 2
1 BDR - Ocean Front - Max 4	4/2	TIER 1	TIER 1	TIER 3	TIER 3
1 BDR - Ocean Front - Max 6	6/2	TIER 1	TIER 1	TIER 3	TIER 3
2 BDR Lockoff - Ocean View	6/4	TIER 2	TIER 2	TIER 4	TIER 5
2 BDR - Ocean Front	8/4	TIER 2	TIER 3	TIER 4	TIER 5
3 BDR Lockoff - Ocean Front	10/6	TIER 3	TIER 4	TIER 5	TIER 6
2021 WEEKS		1-8, 47, 49-50	9-12, 44-46, 48	13-23, 33-35, 37-43, 51-53	24-32, 36
2022 WEEKS		1-8, 48-50	9-12, 44-47	13-23, 33-34, 36-43, 51-52	24-32, 35

Check-in day for weekly occupancy: Any day.

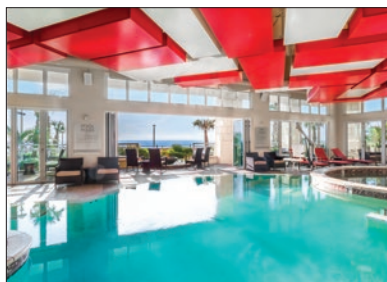


Ocean Beach Club

3401 Atlantic Avenue, Virginia Beach, Virginia 23451, United States, +1.757.213.0601

Accommodation	Occupancy	Low Season	Mid Season	High Season	Peak Season
Studio	2/2	TIER 1	TIER 1	TIER 1	TIER 2
Studio Double - Ocean Front	4/2	TIER 1	TIER 1	TIER 1	TIER 2
Studio - Ocean Front	2/2	TIER 1	TIER 1	TIER 2	TIER 2
1 BDR Suite - No Balcony	4/2	TIER 1	TIER 1	TIER 2	TIER 3
1 BDR Suite - Balcony Restricted View	4/2	TIER 1	TIER 1	TIER 2	TIER 3
1 BDR Suite - Ocean View	4/2	TIER 1	TIER 2	TIER 3	TIER 3
1 BDR Suite - Ocean Front	4/2	TIER 1	TIER 2	TIER 3	TIER 4
2 BDR Suite - City View	6/4	TIER 2	TIER 3	TIER 4	TIER 5
2 BDR Suite - City View - Split Level	6/4	TIER 2	TIER 3	TIER 5	TIER 5
2 BDR Suite - Ocean Front	6/4	TIER 2	TIER 3	TIER 5	TIER 5
2 BDR Deluxe Suite - Ocean Front	6/4	TIER 3	TIER 4	TIER 5	TIER 6
2 BDR Suite - Ocean Front - Split Level	6/4	TIER 3	TIER 4	TIER 5	TIER 6
3 BDR Suite - Non Ocean Front	8/6	TIER 3	TIER 4	TIER 5	TIER 6
3 BDR Suite - Ocean Front - Max 1010/6		TIER 4	TIER 5	TIER 6	TIER 6
3 BDR Suite Ocean Front	8/6	TIER 4	TIER 5	TIER 6	TIER 6
3 BDR Deluxe Suite - Ocean Front	8/6	TIER 4	TIER 5	TIER 6	TIER 6
2021 WEEKS		1-8, 47, 49-50	9-12, 44-46, 48	13-23, 37-43, 51-53	24-36
2022 WEEKS		1-8, 48-50	9-12, 44-47	13-23, 37-43, 51-52	24-36

Check-in day for weekly occupancy: Any day.



Oceanaire Resort

3421 Atlantic Avenue, Virginia Beach, Virginia 23451, United States, +1.757.213.0601

Accommodation	Occupancy	Low Season	Mid Season	High Season	Peak Season
Studio with Ocean View Balcony	4/2	TIER 1	TIER 1	TIER 2	TIER 3
Studio with Ocean Front Balcony	4/2	TIER 1	TIER 2	TIER 3	TIER 4
1 BDR - Ocean View with Balcony	4/2	TIER 1	TIER 2	TIER 3	TIER 5
1 BDR - Ocean Front with Balcony	4/2	TIER 2	TIER 2	TIER 4	TIER 5
2 BDR - Ocean View Suite	8/4	TIER 3	TIER 4	TIER 5	TIER 6
2 BDR - Ocean Front Suite - Max 6	6/4	TIER 3	TIER 4	TIER 6	TIER 6
2 BDR - Ocean Front Suite - Max 8	8/4	TIER 3	TIER 4	TIER 6	TIER 6
2 BDR Deluxe - Ocean Front Suite	8/4	TIER 3	TIER 4	TIER 6	TIER 6
3 BDR - Ocean Front Suite	10/6	TIER 4	TIER 5	TIER 6	TIER 6
3 BDR - Ocean Front Penthouse	10/6	TIER 4	TIER 6	TIER 6	TIER 6
2021 WEEKS		1-8, 47, 49-50	9-12, 44-46, 48	13-23, 37-43, 51-53	24-36
2022 WEEKS		1-8, 48-50	9-12, 44-47	13-23, 37-43, 51-52	24-36

Check-in day for weekly occupancy: Any day.



Turtle Cay Resort

600 Atlantic Avenue, Virginia Beach, Virginia 23451, United States, +1.757.437.5565

Accommodation	Occupancy	Low Season	Mid Season	High Season	Peak Season
Studio	4/2	TIER 1	TIER 1	TIER 1	TIER 1
1 BDR	4/2	TIER 1	TIER 1	TIER 2	TIER 3
2 BDR Lockoff	8/4	TIER 2	TIER 3	TIER 3	TIER 4
2 BDR Penthouse	6/4	TIER 2	TIER 4	TIER 5	TIER 5
2021 WEEKS		1-11, 47, 49-50	12-19, 44-46, 51-53	20-25, 35-43, 48	26-34
2022 WEEKS		1-11, 48-50	12-19, 44-46, 51-52	20-25, 35-43, 47	26-34

Check-in day for weekly occupancy: Any day.



Greensprings Vacation Resort

3500 Ludwell Parkway, Williamsburg, Virginia 23188, United States, +1.757.253.1177

Accommodation	Occupancy	Low Season	Mid Season	High Season	Peak Season
2 BDR	6/4	TIER 1	TIER 2	TIER 2	TIER 4
4 BDR	12/8	TIER 3	TIER 4	TIER 5	TIER 6
2021 WEEKS		1-12, 44-47, 49-50	15-21, 38-43	22-26, 28-37	13-14, 27, 48, 51-53
2022 WEEKS		1-12, 44-46, 48-50	13, 16-20, 22, 38-43	21, 23-25, 27-37	14-15, 26, 47, 51-52

Check-in for weekly occupancy: Any day. No elevator.



The Historic Powhatan Resort

3601 Ironbound Road, Williamsburg, Virginia 23188, United States, +1.757.220.1200

Accommodation	Occupancy	Low Season	Mid Season	High Season	Peak Season
1 BDR Upstairs	4/2	TIER 1	TIER 1	TIER 1	TIER 2
1 BDR Ground Floor	4/2	TIER 1	TIER 1	TIER 2	TIER 2
2 BDR	6/4	TIER 1	TIER 1	TIER 2	TIER 3
2 BDR Deluxe	6/4	TIER 1	TIER 2	TIER 3	TIER 4
3 BDR	8/6	TIER 1	TIER 2	TIER 3	TIER 4
4 BDR	12/8	TIER 2	TIER 3	TIER 5	TIER 5
4 BDR Deluxe	12/8	TIER 3	TIER 4	TIER 5	TIER 6
2021 WEEKS		1-12, 44-47, 49-50	15-21, 38-43	22-26, 28-37	13-14, 27, 48, 51-53
2022 WEEKS		1-12, 44-46, 48-50	13, 16-20, 22, 38-43	21, 23-25, 27-37	14-15, 26, 47, 51-52

Check-in for weekly occupancy: Any day. No elevator.

WASHINGTON

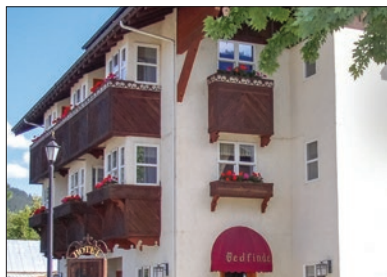


RVC's Sandcastle at Birch Bay

7854 Birch Bay Drive, Birch Bay, Washington 98230, United States, +1.360.371.4900

Accommodation	Occupancy	Low Season	Mid Season	High Season	Peak Season
2 BDR	6/6	TIER 1	TIER 1	TIER 2	TIER 3
3 BDR	6/6	TIER 1	TIER 2	TIER 3	TIER 3
2021 WEEKS		1-9	10-12, 15-23, 37-47, 49-50	24-26, 28-36	13-14, 27, 48, 51-53
2022 WEEKS		1-9	10-13, 16-23, 37-46, 48-50	24-25, 27-36	14-15, 26, 47, 51-52

Check-in day for weekly occupancy: Friday / Saturday / Sunday. Daily resort fees of \$17 for 2 Bedroom and \$20 for 3 Bedroom applies. Local taxes, parking and /or housekeeping fees may apply, payable to the resort. There is a per person, per night penalty for exceeding the maximum occupancy.



Blackbird Lodge

305 8th Street, Leavenworth, Washington 98826, United States, +1.509.548.5800

Accommodation	Occupancy	Low Season	Mid Season	High Season	Peak Season
Studio Efficiency	2/2	TIER 1	TIER 1	TIER 2	TIER 2
Studio	2/2	TIER 1	TIER 1	TIER 2	TIER 2
2021 WEEKS		1-9	10-12, 15-23, 37-47, 49-50	24-26, 28-36	13-14, 27, 48, 51-53
2022 WEEKS		1-9	10-13, 16-23, 37-46, 48-50	24-25, 27-36	14-15, 26, 47, 51-52

Check-in day for weekly occupancy: Friday / Saturday / Sunday. A security deposit of \$50 is required at check-in. An accommodations/lodging tax is payable at check-in due to state and local regulations. The nightly rate varies by accommodation size and season. Front Desk hours are 8am to 6pm. If arriving late, please contact prior to arrival for late check-in instructions.



Point Brown

1413 Ocean Shores Boulevard Southwest, Ocean Shores, Washington 98569, United States, +1.360.289.0656

Accommodation	Occupancy	Low Season	Mid Season	High Season	Peak Season
Studio	2/2	TIER 1	TIER 1	TIER 1	TIER 2
1 BDR	4/2	TIER 1	TIER 1	TIER 1	TIER 2
2021 WEEKS		1-9	10-12, 15-23, 37-47, 49-50	24-26, 28-36	13-14, 27, 48, 51-53
2022 WEEKS		1-9	10-13, 16-23, 37-46, 48-50	24-25, 27-36	14-15, 26, 47, 51-52

Check-in day for weekly occupancy: Friday. Check in at Beachcomber Resort , 813 Ocean Shores Blvd. N.W., Ocean Shores, WA 98569, +1.360.289.2710. No elevator. No air conditioning.



VI at Homestead

109 East Homestead Boulevard, Lynden, Washington 98264, United States, +1.360.746.8314

Accommodation	Occupancy	Low Season	Mid Season	High Season	Peak Season
Studio	2/2	TIER 1	TIER 1	TIER 2	TIER 2
1 BDR	4/2	TIER 1	TIER 1	TIER 2	TIER 3
2 BDR	6/4	TIER 1	TIER 2	TIER 3	TIER 3
2021 WEEKS		1-9	10-12, 15-23, 37-47, 49-50	24-26, 28-36	13-14, 27, 48, 51-53
2022 WEEKS		1-9	10-13, 16-23, 37-46, 48-50	24-25, 27-36	14-15, 26, 47, 51-52

Check-in day for weekly occupancy: Friday / Saturday / Sunday.

WISCONSIN



Mirror Lake & Tamarack Resort

874 Xanadu Road, Wisconsin Dells, Wisconsin 53965, United States, +1.608.254.4929

Accommodation	Occupancy	Low Season	Mid Season	High Season	Peak Season
1 BDR	4/2	-	TIER 1	TIER 2	TIER 2
2021 WEEKS			18-21, 35, 37-40, 44-47	12, 15-17, 22-29, 34, 36, 41-43, 48-51	1-11, 13-14, 30-33, 52-53
2022 WEEKS			18-20, 22, 36-40, 44-46, 48	12-13, 16-17, 21, 23-29, 34-35, 41-43, 47, 49-51	1-11, 14-15, 30-33, 52

Check-in day for weekly occupancy: Sunday. A security deposit of \$225 is due at check-in and is refundable at check-out.

SAN JOSE DEL CABO



Cabo Azul Resort & Spa

Paseo Malecon s/n, Lote 11, Col. Fonatur, San Jose del Cabo, Baja California Del Sur 23400, Mexico, +011.52.624.163.5100

Accommodation	Occupancy	Low Season	Mid Season	High Season	Peak Season
Studio - Blocked View	4/2	-	-	-	TIER 3
Studio - Partial Courtyard or Partial Pool View	4/2	-	-	-	- TIER
3					
Studio - Courtyard or Pool View	4/2	-	-	-	TIER 4
1 BDR - Blocked View	4/2	-	-	-	TIER 3
1 BDR Grand - Garden View	4/2	-	-	-	TIER 3
1 BDR Grand - Pool or Partial Ocean View	4/2	-	-	-	- TIER
4					
1 BDR Grand - Deluxe Pool View	4/2	-	-	-	TIER 5
1 BDR Grand - Ocean view	4/2	-	-	-	TIER 5
2 BDR - Blocked View	6/4	-	-	-	TIER 4
2 BDR Grand - Garden View	6/4	-	-	-	TIER 4
2 BDR Grand - Pool or Partial Ocean View	6/4	-	-	-	- TIER
5					
2 BDR Grand - Deluxe Pool View	6/4	-	-	-	TIER 6
2 BDR Grand - Ocean View	6/4	-	-	-	TIER 6
3 BDR Penthouse - Ocean	6/6	-	-	-	TIER 6
3 BDR Grand Penthouse	6/6	-	-	-	TIER 6
2021 WEEKS					1-53
2022 WEEKS					1-52

Check-in day for weekly occupancy: Any day.



RVC's Club Regina Los Cabos

Carretera Transpeninsular Km 22 5, Cerro Colorado, San Jose del Cabo 23400, Mexico, +011.52.624.163.7200

Accommodation	Occupancy	Low Season	Mid Season	High Season	Peak Season
Hotel Room	2/2	-	TIER 2	TIER 3	TIER 3
Hotel Room Suite	2/2	-	TIER 2	TIER 3	TIER 3
1 BDR	4/2	-	TIER 3	TIER 3	TIER 4
2021 WEEKS			37-40	1-12, 15-26, 28-36, 41-47, 49-50	13-14, 27, 48, 51-53
2022 WEEKS			37-40	1-13, 16-25, 27-36, 41-46, 48-50	14-15, 26, 47, 51-52

Check-in day for weekly occupancy: Friday / Saturday / Sunday. Daily resort fees of \$11 for Hotel Room/Hotel Room Suite and \$14 for 1 Bedroom applies. Local taxes may apply, payable to the resort. There is a per person, per night penalty for exceeding the maximum occupancy. A weekly cleaning fee applies. The resort fees cover cost of Internet, activities and equipment for items such as bike tours*, Kayaks*, paddle boards*, bingo, salsa dancing, water aerobics, beach volleyball, and many other activities as well as daily housekeeping tidy. *Not available at all resorts. *For COVID-19 protocol compliance, this resort will be doing mid-week cleans for stays of 7 days or more. Guests may request new towels or additional housecleaning services when desired, but guests must be out of the room during the service. Additionally, non-essentials have been removed from rooms (extra pillows, paper items, coasters, etc.), however, guests may request delivery of any such items.

SAN CARLOS



Sea of Cortez Beach Club

Paseo Mar Bermejo Parcela, Norte No 4 Interior 5 Los Algodones, San Carlos, Sonora 85506, Mexico, +011.52.622.227.0374

Accommodation	Occupancy	Low Season	Mid Season	High Season	Peak Season
Studio	2/2	TIER 1	TIER 1	TIER 2	TIER 2
1 BDR	4/2	TIER 1	TIER 2	TIER 2	TIER 3
2 BDR	6/4	TIER 2	TIER 2	TIER 3	TIER 3
2 BDR Presidential	8/4	TIER 4	TIER 5	TIER 5	TIER 6
2021 WEEKS		35, 37-40	18-34, 36, 41-45	2-10, 17, 46-50	1, 11-16, 51-53
2022 WEEKS		36-40	18-35, 41-45	2-10, 17, 46-50	1, 11-16, 51-52

Check-in day for weekly occupancy: Any day.

NUEVO VALLARTA



Grand Luxxe Nuevo Vallarta

Av. Paseo de las Moras, Nuevo Vallarta, Nayarit 63735, Mexico, +011.52.322.226.4000

Accommodation	Occupancy	Low Season	Mid Season	High Season	Peak Season
1 BDR	4/2	-	TIER 5	TIER 6	TIER 6
2 BDR	6/4	-	TIER 6	TIER 6	TIER 6
2021 WEEKS			37-40	1-12, 15-26, 28-36, 41-47, 49-50	13-14, 27, 48, 51-53
2022 WEEKS			37-40	1-13, 16-25, 27-36, 41-46, 48-50	14-15, 26, 47, 51-52

Check-in day for weekly occupancy: Friday. Weekly Resort Fee of \$75 plus tax. A credit card is required for a security deposit that will be charged upon check-in. Please contact the resort one week before arrival with your reservation number, number of guests, airline/flight number, arrival date and email address. Email: Concierge.cun@grandmayan.com.mx or phone: + 011.984.206.4000 ext. 4683/4695. If arriving late, please contact the resort prior to your arrival at 1.800.739.9969.

QUINTANA ROO



Grand Luxxe Riviera Maya

Kilometro 48 Carretera Federal Cancún-Playa del Carmen, Quintana Roo, 77710, Mexico, +011.52.984.206.4000

Accommodation	Occupancy	Low Season	Mid Season	High Season	Peak Season
Studio	2/2	-	TIER 4	TIER 5	TIER 5
1 BDR	4/2	-	TIER 5	TIER 6	TIER 6
2 BDR	6/4	-	TIER 6	TIER 6	TIER 6
2021 WEEKS			37-40	1-12, 15-26, 28-36, 41-47, 49-50	13-14, 27, 48, 51-53
2022 WEEKS			37-40	1-13, 16-25, 27-36, 41-46, 48-50	14-15, 26, 47, 51-52

Check-in day for weekly occupancy: Friday. There is a resort fee and Sanitation fee payable to the resort. Weekly Resort Fee of \$75 plus tax. A credit card is required for a security deposit that will be charged upon check-in. Please contact the resort one week before arrival with your reservation number, number of guests, airline/flight number, arrival date and email address. Email: Concierge.cun@grandmayan.com.mx or phone : + 0.11.984.206.4000 ext. 4683/4695. If arriving late, please contact the resort prior to your arrival at 1.800.739.9969. Jungala Luxury Water Park open to all guests staying at this resort. Prices are \$59 USD per adult and \$44 USD per child for a day pass. Price includes park access, towels, lockers, free WiFi, concierge services, and showers.



Laguna Suites Golf and Spa

Paseo Pok Ta Pok Lote 3, Cancún, Quintana Roo 77500, Mexico, +011.52.998.891.5252

Accommodation	Occupancy	Low Season	Mid Season	High Season	Peak Season
Hotel Room Junior Suite	2/2	-	TIER 1	TIER 1	TIER 2
2021 WEEKS			37-40	1-12, 15-26, 28-36, 41-47, 49-50	13-14, 27, 48, 51-53
2022 WEEKS			37-40	1-13, 16-25, 27-36, 41-46, 48-50	14-15, 26, 47, 51-52

Check-in day for weekly occupancy: Friday / Saturday / Sunday. Optional all-inclusive resort. Guest checking-in must be at least 25 years of age. An environmental sanitation tax implemented by the city government will be collected at the Front Desk of the hotel upon check-out. The tax (not included in the room rate) is \$24.18 Mexican Pesos per room per night.

COZUMEL



Allegro Cozumel

Kilometro 16.5 Carretera Sur, San Francisco Palancar, Cozumel, Quintana Roo 77600, Mexico, +011.52.987.872.9770

Accommodation	Occupancy	Low Season	Mid Season	High Season	Peak Season
Superior Hotel Room	2/2	-	TIER 1	TIER 1	TIER 2
2021 WEEKS			37-40	1-12, 15-26, 28-36, 41-47, 49-50	13-14, 27, 48, 51-53
2022 WEEKS			37-40	1-13, 16-25, 27-36, 41-46, 48-50	14-15, 26, 47, 51-52

Check-in day for weekly occupancy: Saturday. A mandatory all-inclusive resort.

ACAPULCO



Mayan Palace Acapulco

Av. Costera De Las Palmas, No. 1121, Fracc Playa Diamante, Acapulco, Guerrero 39897, Mexico, +011.52.744.469.6000

Accommodation	Occupancy	Low Season	Mid Season	High Season	Peak Season
Studio	2/2	-	TIER 2	TIER 2	TIER 3
1 BDR	4/2	-	TIER 2	TIER 3	TIER 3
2 BDR	6/4	-	TIER 3	TIER 3	TIER 4
2021 WEEKS			22-39	1-6, 8-9, 12, 14-22, 40-47, 49-50	7, 10-11, 13, 48, 51-53
2022 WEEKS			23-39	1-6, 8-9, 12-13, 15-22, 40-46, 48-50	7, 10-11, 14, 47, 51-52

Check-in day for weekly occupancy: Friday/Saturday/Sunday.

PUERTO VALLARTA



RVC's Club Regina Puerto Vallarta

Paseo de La Marina Sur No. 205, Puerto Vallarta, Jalisco 48354, Mexico, +011.52.322.226.6300

Accommodation	Occupancy	Low Season	Mid Season	High Season	Peak Season
Hotel Room	2/2	-	TIER 2	TIER 2	TIER 3
Hotel Room Suite	2/2	-	TIER 2	TIER 2	TIER 3
1 BDR	4/4	-	TIER 2	TIER 3	TIER 3
2 BDR	6/6	-	TIER 3	TIER 3	TIER 4
2021 WEEKS			37-47, 49-50	1-12, 15-26, 28-36	13-14, 27, 48, 51-53
2022 WEEKS			37-46, 48-50	1-13, 16-25, 27-36	14-15, 26, 47, 51-52

Check-in day for weekly occupancy: Friday / Saturday / Sunday. Daily resort fees of \$11 for Hotel Room, \$14 for 1 Bedroom and \$17 for 2 Bedroom applies. \$5 USD/day parking fee. Local taxes, parking and/or housekeeping fees may apply, payable to the resort. There is a per person, per night penalty for exceeding the maximum occupancy. The resort fees cover cost of Internet, activities and equipment for items such as bike tours*, Kayaks*, paddle boards*, bingo, salsa dancing, water aerobics, beach volleyball, and many other activities as well as daily housekeeping tidy. *Not available at all resorts. *For COVID-19 protocol compliance, this resort will be doing mid-week cleans for stays of 7 days or more. Guests may request new towels or additional housecleaning services when desired, but guests must be out of the room during the service. Additionally, non-essentials have been removed from rooms (extra pillows, paper items, coasters, etc.), however, guests may request delivery of any such items.

ST. MAARTEN



Flamingo Beach Resort

Pelican Key, Simpson Bay, Philipsburg, St. Maarten, Netherlands Antilles, 011.721.544.3900

Accommodation	Occupancy	Low Season	Mid Season	High Season	Peak Season
Studio - Phase I	4/2	-	TIER 1	TIER 1	TIER 2
Studio Ocean View - Phase I	4/2	-	TIER 1	TIER 2	TIER 2
1 BDR Ocean Front - Phase I	4/4	-	TIER 2	TIER 2	TIER 3
1 BDR Villas - Phase II	4/2	-	TIER 2	TIER 3	TIER 4
2 BDR Villas - Phase II	8/6	-	TIER 3	TIER 4	TIER 5
2021 WEEKS			34-39	1-9, 11-12, 15-26, 28-33, 40-47, 49-50	10, 13-14, 27, 48, 51-53
2022 WEEKS			34-39	1-9, 11-13, 16-25, 27-33, 40-46, 48-50	10, 14-15, 26, 47, 51-52

Check-in day for weekly occupancy: Any day.



Royal Palm Beach Resort

115 Welfare Road, Cole Bay, Philipsburg, St. Maarten, 011.721.544.3737

Accommodation	Occupancy	Low Season	Mid Season	High Season	Peak Season
1 BDR Ocean View	4/4	-	TIER 2	TIER 2	TIER 3
2 BDR Ocean View	6/6	-	TIER 2	TIER 3	TIER 4
3 BDR Ocean View	8/8	-	TIER 3	TIER 4	TIER 5
2021 WEEKS			34-39	1-9, 11-12, 15-26, 28-33, 40-47, 49-50	10, 13-14, 27, 48, 51-53
2022 WEEKS			34-39	1-9, 11-13, 16-25, 27-33, 40-46, 48-50	10, 14-15, 26, 47, 51-52

Check-in day for weekly occupancy: Any day.



Atrium Resort Beach and Spa

6 Billy Folly Road, Simpson Bay, St. Maarten, +1.888.992.8748

Accommodation	Occupancy	Low Season	Mid Season	High Season	Peak Season
Studio	2/2	-	TIER 1	TIER 2	TIER 3
1 BDR	4/2	-	TIER 2	TIER 3	TIER 4
2 BDR	6/4	-	TIER 2	TIER 3	TIER 4
2021 WEEKS			34-39	1-12, 15-26, 28-33, 40-47, 49-50	13-14, 27, 48, 51-53
2022 WEEKS			34-39	1-13, 16-25, 27-33, 40-46, 48-50	14-15, 26, 47, 51-52

Check-in day for weekly occupancy: Saturday. Resort fee \$50 per week plus energy surcharge of \$4.50 per person/per day paid by guest at check-in. Guests must contact resort if arriving late or on a day other than what is listed on confirmation. Cribs and rollways are available free of charge.

ARUBA



Barcelo Aruba

J.E. Irausquin Boulevard 83, Palm Beach, Aruba, + 297.586.4500

Accommodation	Occupancy	Low Season	Mid Season	High Season	Peak Season
Deluxe Hotel Room	2/2	-	TIER 2	TIER 2	TIER 3
2021 WEEKS			37-40	1-12, 15-26, 28-36, 41-47, 49-50	13-14, 27, 48, 51-53
2022 WEEKS			37-40	1-13, 16-25, 27-36, 41-46, 48-50	14-15, 26, 47, 51-52

Check-in day for weekly occupancy: Saturday. A mandatory all-inclusive resort.

DOMINICAN REPUBLIC



Occidental Punta Cana - Punta Cana

Avenida Espana, Bavaro, Dominican Republic, +1.809.221.8787

Accommodation	Occupancy	Low Season	Mid Season	High Season	Peak Season
Deluxe Hotel Room	2/2	-	TIER 2	TIER 2	TIER 3
2021 WEEKS			37-40	1-12, 15-26, 28-36, 41-47, 49-50	13-14, 27, 48, 51-53
2022 WEEKS			37-40	1-13, 16-25, 27-36, 41-46, 48-50	14-15, 26, 47, 51-52

Check-in day for weekly occupancy: Saturday. A mandatory all-inclusive resort.

Grand Palladium Punta Cana Resort & Spa

C/ El Cortecito, Playa Bavaro, Punta Cana, Dominican Republic, +1.809.221.8149

Accommodation	Occupancy	Low Season	Mid Season	High Season	Peak Season
Junior Suite Hotel Room	2/2	-	TIER 2	TIER 2	TIER 3
2 BDR Lock-Off Suite	6/4	-	TIER 3	TIER 3	TIER 4
2021 WEEKS			35, 37-39	1-12, 15-16, 18-26, 28-34, 36, 40-47, 49-50	13-14, 17, 27, 48, 51-53
2022 WEEKS			36-39	1-13, 16, 18-25, 27-35, 40-46, 48-50	14-15, 17, 26, 47, 51-52

Check-in day for weekly occupancy: Friday. A mandatory all-inclusive resort.

ENGLAND



Cromer Country Club

127 Overstrand Road, Cromer, Norfolk, NR27 0DJ, United Kingdom, +011.44.1263.513.833

Accommodation	Occupancy	Low Season	Mid Season	High Season	Peak Season
Studio	2/2	TIER 1	TIER 1	TIER 3	TIER 3
1 BDR	4/2	TIER 1	TIER 2	TIER 4	TIER 4
1 BDR Superior	4/2	TIER 1	TIER 2	TIER 4	TIER 4
2 BDR	6/4	TIER 1	TIER 2	TIER 5	TIER 5
3 BDR	7/6	TIER 3	TIER 4	TIER 6	TIER 6
2021 WEEKS		1-12, 46-50	15-20, 23-24, 39-41, 44-45, 51-53	13-14, 21-22, 25-26, 37-38	27-36, 42-43
2022 WEEKS		1-12, 46-50	13, 16-20, 23-24, 39-41, 44-45, 51-52	14-15, 21-22, 25, 27, 37-38	26, 28-36, 42-43

Check-in day for weekly occupancy: Saturday.



Pine Lake Resort

Dock Acres, Carnforth, Lancashire, LA6 1JZ, United Kingdom, +011.44.1524.736.190

Accommodation	Occupancy	Low Season	Mid Season	High Season	Peak Season
Studio	2/2	TIER 1	TIER 2	TIER 3	TIER 4
2 BDR	6/4	TIER 2	TIER 3	TIER 4	TIER 5
2021 WEEKS		1-12, 46-50	15-20, 23-24, 39-41, 44-45, 51-53	13-14, 21-22, 25-26, 37-38	27-36, 42-43
2022 WEEKS		1-12, 46-50	13, 16-20, 23-24, 39-41, 44-45, 51-52	14-15, 21-22, 25, 27, 37-38	26, 28-36, 42-43

Check-in day for weekly Occupancy: Saturday.



Thurnham Hall

Thurnham, Nr. Lancaster, Lancashire, LA2 0DT, United Kingdom, +011.44.1524.751.766

Accommodation	Occupancy	Low Season	Mid Season	High Season	Peak Season
Studio	2/2	TIER 1	TIER 1	TIER 3	TIER 3
1 BDR	4/2	TIER 1	TIER 2	TIER 4	TIER 4
1 BDR Family	4/2	TIER 1	TIER 2	TIER 4	TIER 4
2 BDR	6/4	TIER 2	TIER 3	TIER 5	TIER 5
2021 WEEKS		46-53	1-12, 39-45	13-20, 37-38	21-36
2022 WEEKS		46-52	1-12, 39-45	13-20, 37-38	21-36

Check-in day for weekly Occupancy: Friday / Sunday.



Woodford Bridge Country Club

Milton Damerel, Nr. Holsworthy, Devon, EX22 7LL, United Kingdom, +011.44.1409.261.481

Accommodation	Occupancy	Low Season	Mid Season	High Season	Peak Season
Club Suite	2/2	TIER 1	TIER 1	TIER 2	TIER 2
1 BDR	4/2	TIER 1	TIER 2	TIER 3	TIER 3
1 BDR Lodge	4/2	TIER 1	TIER 2	TIER 3	TIER 3
2 BDR Lodge	6/4	TIER 1	TIER 3	TIER 4	TIER 4
2021 WEEKS		1-12, 46-50	15-20, 23-24, 39-41, 44-45, 51-53	13-14, 21-22, 25-26, 37-38	27-36, 42-43
2022 WEEKS		1-12, 46-50	13, 16-20, 23-24, 39-41, 44-45, 51-52	14-15, 21-22, 25, 27, 37-38	26, 28-36, 42-43

Check-in day for weekly occupancy: Friday / Saturday / Sunday.



Wychynor Park Country Club

Wychnor Hall, Nr. Barton under Needwood, Burton on Trent, Staffordshire, DE13 8BU, United Kingdom, +011.44.1283.791.391

Accommodation	Occupancy	Low Season	Mid Season	High Season	Peak Season
1 BDR	4/2	TIER 1	TIER 2	TIER 3	TIER 4
2 BDR	6/4	TIER 2	TIER 3	TIER 4	TIER 5
3 BDR	6/6	TIER 3	TIER 4	TIER 5	TIER 6
2021 WEEKS		1-12, 46-50	15-20, 23-24, 39-41, 44-45, 51-53	13-14, 21-22, 25-26, 37-38	27-36, 42-43
2022 WEEKS		1-12, 46-50	13, 16-20, 23-24, 39-41, 44-45, 51-52	14-15, 21-22, 25, 27, 37-38	26, 28-36, 42-43

Check-in day for weekly occupancy: Saturday.

SCOTLAND



The Kenmore Club

Kenmore by Aberfeldy, Perthshire, PH15 2HH, Scotland, 011.44.01887.830555

Accommodation	Occupancy	Low Season	Mid Season	High Season	Peak Season
1 BDR	4/2	TIER 1	TIER 2	TIER 4	TIER 5
2 BDR	6/4	TIER 2	TIER 3	TIER 4	TIER 5
2 BDR Elite	6/4	TIER 3	TIER 4	TIER 5	TIER 6
3 BDR	8/6	TIER 4	TIER 5	TIER 6	TIER 6
2021 WEEKS		1-12, 46-50	18-19, 37-41, 44-45	13-17, 20-27, 36, 42-43, 51-53	28-35
2022 WEEKS		1-12, 46-50	18-19, 37-41, 44-45	13-17, 20-27, 35, 42-43, 51-52	28-34, 36

Check-in day for weekly occupancy: Saturday and Sunday.

AUSTRIA



The Alpine Club

Alpineweg 142, 8971, Rohrmoos/Schladming, Austria, +011.43.368.761.215

Accommodation	Occupancy	Low Season	Mid Season	High Season	Peak Season
Studio	2/2	TIER 1	TIER 1	TIER 3	TIER 3
1 BDR	4/2	TIER 1	TIER 2	TIER 4	TIER 4
2 BDR	6/4	TIER 1	TIER 3	TIER 4	TIER 5
2 BDR Elite	6/4	TIER 1	TIER 3	TIER 5	TIER 6
2021 WEEKS		45-50	15-20, 38-44	13-14, 21-37	1-12, 51-53
2022 WEEKS		45-50	13, 16-20, 38-44	14-15, 21-37	1-12, 51-52

Check-in day for weekly occupancy: Saturday.

BULGARIA



Balkan Jewel Resort

Area Betolovoto, 2760, Razlog, Bulgaria, +011.359.47.98.111

Accommodation	Occupancy	Low Season	Mid Season	High Season	Peak Season
Club Suite	2/2	-	TIER 1	TIER 1	TIER 2
Studio	3/2	-	TIER 1	TIER 1	TIER 2
Studio Suite	4/2	-	TIER 1	TIER 2	TIER 2
1 BDR	3/2	-	TIER 1	TIER 2	TIER 2
1 BDR Family	4/2	-	TIER 2	TIER 2	TIER 3
2 BDR	5/3	-	TIER 2	TIER 2	TIER 3
2 BDR Family	6/4	-	TIER 2	TIER 3	TIER 3
2021 WEEKS			18-21, 23-24, 39-41, 44	13-17, 22, 25-38, 42-43, 45-50	1-12, 51-53
2022 WEEKS			18-20, 22-24, 39-41, 44	13-17, 21, 25-38, 42-43, 45-50	1-12, 51-52

Check-in day for weekly occupancy: Saturday.

ITALY



Palazzo Catalani

Via Montecavallo, 26, 01038 Soriano nel Cimino (VT), Italy, +39.076.174.4030

Accommodation	Occupancy	Low Season	Mid Season	High Season	Peak Season
Club Suite	2/2	TIER 1	TIER 2	TIER 2	TIER 2
Studio	3/3	TIER 1	TIER 2	TIER 2	TIER 3
1 BDR	4/2	TIER 1	TIER 2	TIER 3	TIER 3
2021 WEEKS		1-4, 49-50	5-12, 41, 44-48	13-23, 38-40, 42-43, 51-53	24-37
2022 WEEKS		1-4, 49-50	5-12, 41, 44-48	13-23, 38-40, 42-43, 51-52	24-37

Check-in day for weekly occupancy: Saturday.

FRANCE



Le Club Mougins

199 Chemin du Val Fleuri, 06250 Mougins, France, +011.33.492.924.600

Accommodation	Occupancy	Low Season	Mid Season	High Season	Peak Season
1 BDR	4/2	TIER 1	TIER 2	TIER 2	TIER 3
2 BDR	6/4	TIER 2	TIER 2	TIER 3	TIER 4
3 BDR	8/6	TIER 2	TIER 3	TIER 3	TIER 4
2021 WEEKS		1-11, 45-50	12, 15-20, 39-44	13-14, 21-27, 36-38, 51-53	28-35
2022 WEEKS		1-11, 45-50	12-13, 16-20, 39-44	14-15, 21-27, 36-38, 51-52	28-35

Check-in day for weekly occupancy: Saturday.



Royal Regency

69/71, Rue Defrance, 94300, Vincennes, France, +011.33.149.571.200

Accommodation	Occupancy	Low Season	Mid Season	High Season	Peak Season
Studio	2/2	-	-	TIER 2	TIER 2
1 BDR	4/2	-	-	TIER 2	TIER 3
2 BDR	6/4	-	-	TIER 3	TIER 4
3 BDR	8/6	-	-	TIER 4	TIER 4
2021 WEEKS				2-12, 45-48	1, 13-44, 49-53
2022 WEEKS				2-12, 45-48	1, 13-44, 49-52

Check-in day for weekly occupancy: Saturday.

PORTUGAL

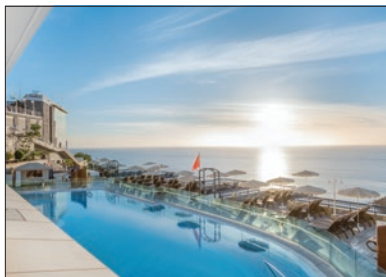


Vilar do Golf

Quinta Do Lago, 8135-903, Almancil, Algarve, Portugal, 011.35.128.935.2000

Accommodation	Occupancy	Low Season	Mid Season	High Season	Peak Season
1 BDR	4/2	TIER 1	TIER 2	TIER 4	TIER 5
2 BDR	6/4	TIER 2	TIER 2	TIER 5	TIER 6
2 BDR Family	6/4	TIER 2	TIER 2	TIER 5	TIER 6
2021 WEEKS		1-12, 46-50	15-20, 23-24, 39-41, 44-45, 51-53	13-14, 21-22, 25-26, 37-38, 42-43	27-36
2022 WEEKS		1-12, 46-50	13, 16-20, 23-24, 39-41, 44-45, 51-52	14-15, 21-22, 25, 27, 37-38, 42-43	26, 28-36

Check-in day for weekly occupancy: Friday / Saturday.



SPAIN

Cala Blanca

Calle Albaicin 12, Urbanizacion Costa Taurito, 35138 Mogan, Gran Canaria, Canary Island, Spain,
+011.34.928.565.000

Accommodation	Occupancy	Low Season	Mid Season	High Season	Peak Season
1 BDR	4/2	-	TIER 1	TIER 1	TIER 1
2 BDR	6/4	-	TIER 2	TIER 2	TIER 2
2021 WEEKS			17-20, 44-50	21-25, 36-41, 51-53	1-16, 26-35, 42-43
2022 WEEKS			17-20, 44-50	21-25, 35, 37-41, 51-52	1-16, 26-34, 36, 42-43

Check-in day for weekly occupancy: Saturday.

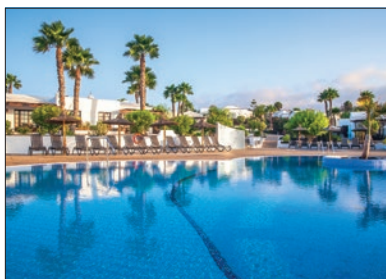


Club del Carmen

Calle Noruega 2, Playa de los Pocillos, 35510, Puerto Del Carmen, Lanzarote, Canary Islands, Spain,
+011.34.928.512.745

Accommodation	Occupancy	Low Season	Mid Season	High Season	Peak Season
1 BDR	4/2	-	TIER 1	TIER 3	TIER 4
2 BDR	6/4	-	TIER 2	TIER 4	TIER 5
2 BDR Villa	6/4	-	TIER 3	TIER 5	TIER 6
2021 WEEKS			17-20, 44-50	21-25, 36-41, 51-53	1-16, 26-35, 42-43
2022 WEEKS			17-20, 44-50	21-25, 35, 37-41, 51-52	1-16, 26-34, 36, 42-43

Check-in day for weekly occupancy: Saturday / Thursday.



Jardines del Sol

Calle Francia 1, Urb. Montana Roja, Playa Blanca, 35570 Yaiza, Lanzarote, Canary Islands, Spain,
+011.34.928.517.608

Accommodation	Occupancy	Low Season	Mid Season	High Season	Peak Season
2 BDR Villa	6/4	-	TIER 2	TIER 4	TIER 5
3 BDR Villa	8/6	-	TIER 3	TIER 5	TIER 6
4 BDR Villa	10/8	-	TIER 4	TIER 6	TIER 6
2021 WEEKS			17-20, 44-50	21-25, 36-41, 51-53	1-16, 26-35, 42-43
2022 WEEKS			17-20, 44-50	21-25, 35, 37-41, 51-52	1-16, 26-34, 36, 42-43

Check-in day for weekly occupancy: Saturday.



Los Amigos Beach Club

Urb. Playamarina, Carretera de Cadiz Km 204, 29649 Mijas Costa, Malaga, Spain, +011.34.952.468.686

Accommodation	Occupancy	Low Season	Mid Season	High Season	Peak Season
Studio Suite	2/2	TIER 1	TIER 1	TIER 2	TIER 3
1 BDR	4/2	TIER 1	TIER 1	TIER 3	TIER 4
1 BDR Elite	4/2	TIER 1	TIER 2	TIER 3	TIER 4
2 BDR	6/4	TIER 1	TIER 2	TIER 4	TIER 4
2 BDR Elite	6/4	TIER 2	TIER 2	TIER 4	TIER 5
3 BDR	8/6	TIER 3	TIER 4	TIER 5	TIER 6
2021 WEEKS		1-12, 46-50	15-20, 23-24, 39-41, 44-45, 51-53	13-14, 21-22, 25-26, 37-38	27-36, 42-43
2022 WEEKS		1-12, 46-50	13, 16-20, 23-24, 39-41, 44-45, 51-52	14-15, 21-22, 25, 27, 37-38	26, 28-36, 42-43

Check-in day for weekly occupancy: Saturday / Sunday. Studio Suites are only suitable for 2 Adults and 2 Children.



Royal Oasis Club at Pueblo Quinta

Avenida Federico Garcia Lorca, 8, Urb. Pueblo Quinta, Fase2, 29630 Benalmadena Costa del Sol, Malaga, Spain, +011.34.952.563.479

Accommodation	Occupancy	Low Season	Mid Season	High Season	Peak Season
1 BDR	4/2	TIER 1	TIER 1	TIER 3	TIER 4
2 BDR	6/4	TIER 2	TIER 3	TIER 4	TIER 5
2021 WEEKS		1-12, 46-50	15-20, 23-24, 39-41, 44-45, 51-53	13-14, 21-22, 25-26, 37-38	27-36, 42-43
2022 WEEKS		1-12, 46-50	13, 16-20, 23-24, 39-41, 44-45, 51-52	14-15, 21-22, 25, 27, 37-38	26, 28-36, 42-43

Check-in day for weekly occupancy: Saturday.



Royal Sunset Beach Club

Calle Londres Numero 6, Playa de Fanabe, 38660 Costa Adeje, Tenerife, Canary Islands, Spain, +011.34.922.712.942

Accommodation	Occupancy	Low Season	Mid Season	High Season	Peak Season
Studio	2/2	-	TIER 1	TIER 3	TIER 4
1 BDR	4/2	-	TIER 1	TIER 4	TIER 4
1 BDR Elite	4/2	-	TIER 2	TIER 4	TIER 5
2 BDR	6/4	-	TIER 2	TIER 4	TIER 5
2021 WEEKS			17-20, 44-50	21-25, 36-41, 51-53	1-16, 26-35, 42-43
2022 WEEKS			17-20, 44-50	21-25, 35, 37-41, 51-52	1-16, 26-34, 36, 42-43

Check-in day for weekly occupancy: Friday.



Royal Tenerife Country Club

Complejo San Andres, Calle San Andres, Golf del Sur, 38639 San Miguel de Abona, Tenerife, Canary Islands, Spain, +011.34.922.738.302

Accommodation	Occupancy	Low Season	Mid Season	High Season	Peak Season
1 BDR	4/2	-	TIER 1	TIER 2	TIER 3
2 BDR	6/4	-	TIER 2	TIER 3	TIER 4
2 BDR Elite	6/4	-	TIER 3	TIER 4	TIER 5
2021 WEEKS			17-20, 44-50	21-25, 36-41, 51-53	1-16, 26-35, 42-43
2022 WEEKS			17-20, 44-50	21-25, 35, 37-41, 51-52	1-16, 26-34, 36, 42-43

Check-in day for weekly occupancy: Friday.



Sahara Sunset

Avenida Rocio Jurado S/N, 29630 Benalmadena Costa, Malaga, Spain, +011.34.952.440.258

Accommodation	Occupancy	Low Season	Mid Season	High Season	Peak Season
Studio	2/2	TIER 1	TIER 2	TIER 4	TIER 4
1 BDR	4/2	TIER 1	TIER 2	TIER 4	TIER 4
2 BDR	6/4	TIER 1	TIER 3	TIER 4	TIER 5
2021 WEEKS		1-12, 46-50	15-20, 23-24, 39-41, 44-45, 51-53	13-14, 21-22, 25-26, 37-38	27-36, 42-43
2022 WEEKS		1-12, 46-50	13, 16-20, 23-24, 39-41, 44-45, 51-52	14-15, 21-22, 25, 27, 37-38	26, 28-36, 42-43

Check-in day for weekly occupancy: Saturday.



Santa Barbara Golf and Ocean Club

Avd. Del Atlantico, Urb. Golf del Sur, 38639 San Miguel de Abona, Tenerife, Canary Islands, Spain,
+011.34.922.738.032

Accommodation	Occupancy	Low Season	Mid Season	High Season	Peak Season
Studio	2/2	-	TIER 1	TIER 2	TIER 2
1 BDR	4/2	-	TIER 2	TIER 2	TIER 3
1 BDR Family	4/2	-	TIER 2	TIER 2	TIER 3
1 BDR Elite	4/2	-	TIER 2	TIER 3	TIER 3
2 BDR	6/4	-	TIER 2	TIER 3	TIER 4
2 BDR Family	6/4	-	TIER 2	TIER 3	TIER 4
2 BDR Elite	6/4	-	TIER 3	TIER 3	TIER 4
3 BDR	8/6	-	TIER 3	TIER 3	TIER 5
3 BDR Elite	8/6	-	TIER 4	TIER 4	TIER 5
2021 WEEKS			17-20, 44-50	21-25, 36-41, 51-53	1-16, 26-35, 42-43
2022 WEEKS			17-20, 44-50	21-25, 35, 37-41, 51-52	1-16, 26-34, 36, 42-43

Check-in day for weekly occupancy: Friday and Saturday.



Sunset Bay Club

Calle Antonio Navarro, 1, Urb. Torviscas Bajo, Playa de Las Americas, 38660 Adeje, Tenerife, Canary Islands, Spain, +011.34.922.714.200

Accommodation	Occupancy	Low Season	Mid Season	High Season	Peak Season
STUDIO	2/2	-	Tier 1	Tier 1	Tier 2
1 BEDROOM	4/2	-	Tier 1	Tier 2	Tier 3
2 BEDROOM	6/4	-	Tier 2	Tier 3	Tier 4
2 BEDROOM FAMILY	6/4	-	Tier 2	Tier 3	Tier 4
3 BEDROOM	8/6	-	Tier 3	Tier 5	Tier 5
2021 WEEKS			17-20, 44-50	21-25, 36-41, 51-53	1-16, 26-35, 42-43
2022 WEEKS			17-20, 44-50	21-25, 35, 37-41, 51-52	1-16, 26-34, 36, 42-43

Check-in day for weekly occupancy: Friday.



Sunset Harbour Club

Calle Valencia 3, Urb. Pueblo Torviscas 38660, Costa Adeje, Tenerife, Canary Islands, Spain, +011.34.922.714.690

Accommodation	Occupancy	Low Season	Mid Season	High Season	Peak Season
Studio	2/2	-	TIER 1	TIER 2	TIER 3
1 BDR	4/2	-	TIER 2	TIER 3	TIER 4
2 BDR	6/4	-	TIER 3	TIER 4	TIER 5
2021 WEEKS			17-20, 44-50	21-25, 36-41, 51-53	1-16, 26-35, 42-43
2022 WEEKS			17-20, 44-50	21-25, 35, 37-41, 51-52	1-16, 26-34, 36, 42-43

Check-in day for weekly occupancy: Friday.



Sunset View Club

Calle San Blas s/n, Golf del Sur, 38639 San Miguel De Abona, Tenerife, Canary Islands, Spain,
+011.34.922.738.763

Accommodation	Occupancy	Low Season	Mid Season	High Season	Peak Season
1 BDR	4/2	-	TIER 1	TIER 2	TIER 3
2 BDR	6/4	-	TIER 2	TIER 3	TIER 4
2021 WEEKS			17-20, 44-50	21-25, 36-41, 51-53	1-16, 26-35, 42-43
2022 WEEKS			17-20, 44-50	21-25, 35, 37-41, 51-52	1-16, 26-34, 36, 42-43

Check-in day for weekly occupancy: Friday.



White Sands Beach Club

Via Ronda ZH3, Arenal D'en Castell, 07740 Es Mercadal, Menorca, Balearic Islands, Spain, +011.34.971.358.075

Accommodation	Occupancy	Low Season	Mid Season	High Season	Peak Season
Studio	2/2	TIER 1	TIER 1	TIER 3	TIER 3
1 BDR	4/2	TIER 1	TIER 1	TIER 3	TIER 3
2 BDR	6/4	TIER 1	TIER 2	TIER 3	TIER 4
3 BDR	6/4	TIER 1	TIER 2	TIER 4	TIER 4
2021 WEEKS		1-12, 46-50	15-20, 23-24, 39-41, 44-45, 51-53	13-14, 21-22, 25-26, 37-38	27-36, 42-43
2022 WEEKS		1-12, 46-50	13, 16-20, 23-24, 39-41, 44-45, 51-52	14-15, 21-22, 25, 27, 37-38	26, 28-36, 42-43

Check-in day for weekly occupancy: Friday.

SOUTH AFRICA

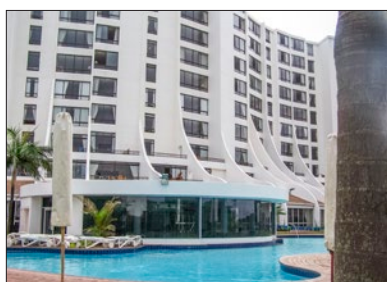


Avalon Springs

Uitvlucht Str, Montagu, 6720 Western Cape, South Africa, +27.236.141150

Accommodation	Occupancy	Low Season	Mid Season	High Season	Peak Season
2 BDR	6/4	-	-	TIER 3	TIER 3
2021 WEEKS				20-37	1-19, 38-53
2022 WEEKS				20-37	1-19, 38-52

Check-in day for weekly occupancy: Friday. This resort is built on varying levels, although most of the facilities are on the lowest and flattest level, this resort is not recommended for guests with walking difficulties. Prior to arrival advise your credit card company that you are traveling to South Africa and to expect transactions from this location - some credit card companies may block your card after the first transaction as a protection from fraud if you do not let them know. Beware of baboons when you are driving. These local animals can sometimes obstruct the highway and be a nuisance. Please do not feed them if you stop as they can occasionally become aggressive.



Breakers Resort

88 Lagoon Drive, Umhlanga Rocks, KwaZulu- Natal, 4319, South Africa, +27.315.612271

Accommodation	Occupancy	Low Season	Mid Season	High Season	Peak Season
2 BDR	6/4	-	-	TIER 3	TIER 3
2021 WEEKS				20-37	1-19, 38-53
2022 WEEKS				20-37	1-19, 38-52

Check-in day for weekly occupancy: Saturday. Car hire is essential to tour the surrounding area. Prior to arrival advise your credit card company that you are traveling to South Africa and to expect transactions from this location - some credit card companies may block your card after the first transaction as a protection from fraud if you do not let them know.



Champagne Sports Resort

R600 Champagne Valley, Winterton, 3340, South Africa, +27.364.688000

Accommodation	Occupancy	Low Season	Mid Season	High Season	Peak Season
2 BDR	6/4	-	-	TIER 3	TIER 3
3 BDR	8/6	-	-	TIER 3	TIER 4
2021 WEEKS				20-37	1-19, 38-53
2022 WEEKS				20-37	1-19, 38-52

Check-in day for weekly occupancy: Friday. Car hire is essential to tour the surrounding area. Prior to arrival, advise your credit card company that you are traveling to South Africa and to expect transactions from this location - some credit card companies may block your card after the first transaction as a protection from fraud if you do not let them know.



The Peninsula

313 Beach Road, Sea Point 8060, Cape Town, South Africa, +27.214.307777

Accommodation	Occupancy	Low Season	Mid Season	High Season	Peak Season
1 BDR	4/2	-	-	TIER 2	TIER 3
2 BDR	6/4	-	-	TIER 3	TIER 3
2021 WEEKS				20-37	1-19, 38-53
2022 WEEKS				20-37	1-19, 38-52

Check-in day for weekly occupancy: Friday. Prior to arrival advise your credit card company that you are traveling to South Africa and to expect transactions from this location - some credit card companies may block your card after the first transaction as a protection from fraud if you do not let them know. There is a charge to park at the resort upon check-in.



Wilderness Dunes

N2 Highway, 6650 Wilderness, West Cape, South Africa, +27.448.770221

Accommodation	Occupancy	Low Season	Mid Season	High Season	Peak Season
2 BDR	6/4	-	-	TIER 3	TIER 3
3 BDR	8/6	-	-	TIER 3	TIER 4
2021 WEEKS				20-37	1-19, 38-53
2022 WEEKS				20-37	1-19, 38-52

Check-in day for weekly occupancy: Friday. Guests with mobility restrictions may find the resort difficult to navigate due to the resort being built on varying levels and has many steps and inclines. There is no accommodation accessible without having to negotiate stairs or steps. Prior to arrival advise your credit card company that you are traveling to South Africa and to expect transactions from this location. Some credit card companies may block your card after the first transaction as a protection from fraud if you do not let them know. Beware of the baboons when you are driving. These local animals can obstruct the highways and be a nuisance. Please do not feed them if you stop as they can occasionally be aggressive. When checking-in, there are many decking style steps up to the chalets (approx. 30). The resort will help with luggage.



INDONESIA

Anantara Vacation Club Bali Seminyak

J.L. Drupadi No. 28, Seminyak, Bali 80361, Indonesia, +62.361.73.7908

Accommodation	Occupancy	Low Season	Mid Season	High Season	Peak Season
1 BDR Pool Villa	2/2	-	-	TIER 6	TIER 6
2 BDR Pool Villa	6/4	-	-	TIER 6	TIER 6
2021 WEEKS				1-12, 15-16, 45-53	13-14, 17-44
2022 WEEKS				1-13, 16, 45-52	14-15, 17-44

Check-in day for weekly occupancy: Any day. A mandatory government and service tax of US \$12 per night per apartment is collected by the resort. The airport tax for arrivals at Ngurah Rai International Airport is as follows: Domestic: IDR 40,000 per person; International IDR 150,000 per person.

THAILAND



Anantara Vacation Club Bophut Koh Samui

99/9 Bophut Bay, Koh Samui, Surat Thani 84320, Thailand, +66.77.428.3009

Accommodation	Occupancy	Low Season	Mid Season	High Season	Peak Season
1 BDR Pool Suite	4/2	-	-	TIER 4	TIER 5
2 BDR Suite	4/4	-	-	TIER 5	TIER 6
2 BDR Pool Suite	4/2	-	-	TIER 5	TIER 6
2021 WEEKS				32-37	1-31, 38-53
2022 WEEKS				32-37	1-31, 38-52

Check-in day for weekly occupancy: Any day.



Anantara Vacation Club Phuket Mai Khao

887 Moo 3, Tumbon Mai Khao, Thalang District, Phuket 83110, Thailand, +66.76.337.200

Accommodation	Occupancy	Low Season	Mid Season	High Season	Peak Season
1 BDR Apartment Suite	4/2	-	-	TIER 5	TIER 5
1 BDR Pool Villa	4/2	-	-	TIER 6	TIER 6
2 BDR Apartment Suite	6/4	-	-	TIER 5	TIER 6
2 BDR Pool Villa	6/4	-	-	TIER 6	TIER 6
2021 WEEKS				32-37	1-31, 38-53
2022 WEEKS				32-37	1-31, 38-52

Check-in day for weekly occupancy: Any day.

AUSTRALIA



Bellbrae Country Club

10 Woodacres Road, Bellbrae VIC 3228, Australia, +61.03.5261.5167

Accommodation	Occupancy	Low Season	Mid Season	High Season	Peak Season
1 BDR	4/2	-	TIER 4	TIER 4	TIER 5
2 BDR	6/4	-	TIER 5	TIER 5	TIER 6
2021 WEEKS			29-34	23-28, 45-49	1-22, 35-44, 50-53
2022 WEEKS			29-34	23-28, 45-49	1-22, 35-44, 50-52

Check-in day for weekly occupancy: Friday.



Mt. Martha Valley Resort

10c Country Club Drive, Safety Beach VIC 3936, Australia, +61.03.5987.0872

Accommodation	Occupancy	Low Season	Mid Season	High Season	Peak Season
1 BDR	4/2	-	TIER 3	TIER 3	TIER 5
2 BDR	6/4	-	TIER 4	TIER 5	TIER 5
2021 WEEKS			29-34	23-28, 45-49	1-22, 35-44, 50-53
2022 WEEKS			29-34	23-28, 45-49	1-22, 35-44, 50-52

Check-in day for weekly occupancy: Friday.



Tamarind Sands

49 Tamarind Avenue, Cabarita Beach NSW 2488, Australia, +61.02.6676.3255

Accommodation	Occupancy	Low Season	Mid Season	High Season	Peak Season
1 BDR	4/2	-	TIER 4	TIER 5	TIER 5
2 BDR	6/4	-	TIER 5	TIER 5	TIER 6
2021 WEEKS			29-34	23-28, 45-49	1-22, 35-44, 50-53
2022 WEEKS			29-34	23-28, 45-49	1-22, 35-44, 50-52

Check-in day for weekly occupancy: Friday.

NEW ZEALAND



Anantara Vacation Club at Oaks Shores

327-343 Frankton Road, Queenstown, 9300 New Zealand, +61.64.34500005

Accommodation	Occupancy	Low Season	Mid Season	High Season	Peak Season
Studio	2/2	-	-	TIER 2	TIER 4
2 BDR Suite	4/4	-	-	TIER 5	TIER 6
2021 WEEKS				17-25	1-16, 26-53
2022 WEEKS				17-25	1-16, 26-52

Check-in day for weekly occupancy: Any day.

2021 Weeks Calendar

WEEK	FRI	SAT	SUN	MON	TUES	WED	THU
1	Jan 1	Jan 2	Jan 3	Jan 4	Jan 5	Jan 6	Jan 7
2	Jan 8	Jan 9	Jan 10	Jan 11	Jan 12	Jan 13	Jan 14
3	Jan 15	Jan 16	Jan 17	Jan 18	Jan 19	Jan 20	Jan 21
4	Jan 22	Jan 23	Jan 24	Jan 25	Jan 26	Jan 27	Jan 28
5	Jan 29	Jan 30	Jan 31	Feb 1	Feb 2	Feb 3	Feb 4
6	Feb 5	Feb 6	Feb 7	Feb 8	Feb 9	Feb 10	Feb 11
7	Feb 12	Feb 13	Feb 14	Feb 15	Feb 16	Feb 17	Feb 18
8	Feb 19	Feb 20	Feb 21	Feb 22	Feb 23	Feb 24	Feb 25
9	Feb 26	Feb 27	Feb 28	Mar 1	Mar 2	Mar 3	Mar 4
10	Mar 5	Mar 6	Mar 7	Mar 8	Mar 9	Mar 10	Mar 11
11	Mar 12	Mar 13	Mar 14	Mar 15	Mar 16	Mar 17	Mar 18
12	Mar 19	Mar 20	Mar 21	Mar 22	Mar 23	Mar 24	Mar 25
13	Mar 26	Mar 27	Mar 28	Mar 29	Mar 30	Mar 31	Apr 1
14	Apr 2	Apr 3	Apr 4	Apr 5	Apr 6	Apr 7	Apr 8
15	Apr 9	Apr 10	Apr 11	Apr 12	Apr 13	Apr 14	Apr 15
16	Apr 16	Apr 17	Apr 18	Apr 19	Apr 20	Apr 21	Apr 22
17	Apr 23	Apr 24	Apr 25	Apr 26	Apr 27	Apr 28	Apr 29
18	Apr 30	May 1	May 2	May 3	May 4	May 5	May 6
19	May 7	May 8	May 9	May 10	May 11	May 12	May 13
20	May 14	May 15	May 16	May 17	May 18	May 19	May 20
21	May 21	May 22	May 23	May 24	May 25	May 26	May 27
22	May 28	May 29	May 30	May 31	Jun 1	Jun 2	Jun 3
23	Jun 4	Jun 5	Jun 6	Jun 7	Jun 8	Jun 9	Jun 10
24	Jun 11	Jun 12	Jun 13	Jun 14	Jun 15	Jun 16	Jun 17
25	Jun 18	Jun 19	Jun 20	Jun 21	Jun 22	Jun 23	Jun 24
26	Jun 25	Jun 26	Jun 27	Jun 28	Jun 29	Jun 30	Jul 1
27	Jul 2	Jul 3	Jul 4	Jul 5	Jul 6	Jul 7	Jul 8
28	Jul 9	Jul 10	Jul 11	Jul 12	Jul 13	Jul 14	Jul 15
29	Jul 16	Jul 17	Jul 18	Jul 19	Jul 20	Jul 21	Jul 22
30	Jul 23	Jul 24	Jul 25	Jul 26	Jul 27	Jul 28	Jul 29
31	Jul 30	Jul 31	Aug 1	Aug 2	Aug 3	Aug 4	Aug 5
32	Aug 6	Aug 7	Aug 8	Aug 9	Aug 10	Aug 11	Aug 12
33	Aug 13	Aug 14	Aug 15	Aug 16	Aug 17	Aug 18	Aug 19
34	Aug 20	Aug 21	Aug 22	Aug 23	Aug 24	Aug 25	Aug 26
35	Aug 27	Aug 28	Aug 29	Aug 30	Aug 31	Sep 1	Sep 2
36	Sep 3	Sep 4	Sep 5	Sep 6	Sep 7	Sep 8	Sep 9
37	Sep 10	Sep 11	Sep 12	Sep 13	Sep 14	Sep 15	Sep 16
38	Sep 17	Sep 18	Sep 19	Sep 20	Sep 21	Sep 22	Sep 23
39	Sep 24	Sep 25	Sep 26	Sep 27	Sep 28	Sep 29	Sep 30
40	Oct 1	Oct 2	Oct 3	Oct 4	Oct 5	Oct 6	Oct 7
41	Oct 8	Oct 9	Oct 10	Oct 11	Oct 12	Oct 13	Oct 14
42	Oct 15	Oct 16	Oct 17	Oct 18	Oct 19	Oct 20	Oct 21
43	Oct 22	Oct 23	Oct 24	Oct 25	Oct 26	Oct 27	Oct 28
44	Oct 29	Oct 30	Oct 31	Nov 1	Nov 2	Nov 3	Nov 4
45	Nov 5	Nov 6	Nov 7	Nov 8	Nov 9	Nov 10	Nov 11
46	Nov 12	Nov 13	Nov 14	Nov 15	Nov 16	Nov 17	Nov 18
47	Nov 19	Nov 20	Nov 21	Nov 22	Nov 23	Nov 24	Nov 25
48	Nov 26	Nov 27	Nov 28	Nov 29	Nov 30	Dec 1	Dec 2
49	Dec 3	Dec 4	Dec 5	Dec 6	Dec 7	Dec 8	Dec 9
50	Dec 10	Dec 11	Dec 12	Dec 13	Dec 14	Dec 15	Dec 16
51	Dec 17	Dec 18	Dec 19	Dec 20	Dec 21	Dec 22	Dec 23
52	Dec 24	Dec 25	Dec 26	Dec 27	Dec 28	Dec 29	Dec 30
53	Dec 31	Jan 1	Jan 2	Jan 3	Jan 4	Jan 5	Jan 6

2022 Weeks Calendar

WEEK	FRI	SAT	SUN	MON	TUES	WED	THU
1	Jan 7	Jan 8	Jan 9	Jan 10	Jan 11	Jan 12	Jan 13
2	Jan 14	Jan 15	Jan 16	Jan 17	Jan 18	Jan 19	Jan 20
3	Jan 21	Jan 22	Jan 23	Jan 24	Jan 25	Jan 26	Jan 27
4	Jan 28	Jan 29	Jan 30	Jan 31	Feb 1	Feb 2	Feb 3
5	Feb 4	Feb 5	Feb 6	Feb 7	Feb 8	Feb 9	Feb 10
6	Feb 11	Feb 12	Feb 13	Feb 14	Feb 15	Feb 16	Feb 17
7	Feb 18	Feb 19	Feb 20	Feb 21	Feb 22	Feb 23	Feb 24
8	Feb 25	Feb 26	Feb 27	Feb 28	Mar 1	Mar 2	Mar 3
9	Mar 4	Mar 5	Mar 6	Mar 7	Mar 8	Mar 9	Mar 10
10	Mar 11	Mar 12	Mar 13	Mar 14	Mar 15	Mar 16	Mar 17
11	Mar 18	Mar 19	Mar 20	Mar 21	Mar 22	Mar 23	Mar 24
12	Mar 25	Mar 26	Mar 27	Mar 28	Mar 29	Mar 30	Mar 31
13	Apr 1	Apr 2	Apr 3	Apr 4	Apr 5	Apr 6	Apr 7
14	Apr 8	Apr 9	Apr 10	Apr 11	Apr 12	Apr 13	Apr 14
15	Apr 15	Apr 16	Apr 17	Apr 18	Apr 19	Apr 20	Apr 21
16	Apr 22	Apr 23	Apr 24	Apr 25	Apr 26	Apr 27	Apr 28
17	Apr 29	Apr 30	May 1	May 2	May 3	May 4	May 5
18	May 6	May 7	May 8	May 9	May 10	May 11	May 12
19	May 13	May 14	May 15	May 16	May 17	May 18	May 19
20	May 20	May 21	May 22	May 23	May 24	May 25	May 26
21	May 27	May 28	May 29	May 30	May 31	Jun 1	Jun 2
22	Jun 3	Jun 4	Jun 5	Jun 6	Jun 7	Jun 8	Jun 9
23	Jun 10	Jun 11	Jun 12	Jun 13	Jun 14	Jun 15	Jun 16
24	Jun 17	Jun 18	Jun 19	Jun 20	Jun 21	Jun 22	Jun 23
25	Jun 24	Jun 25	Jun 26	Jun 27	Jun 28	Jun 29	Jun 30
26	Jul 1	Jul 2	Jul 3	Jul 4	Jul 5	Jul 6	Jul 7
27	Jul 8	Jul 9	Jul 10	Jul 11	Jul 12	Jul 13	Jul 14
28	Jul 15	Jul 16	Jul 17	Jul 18	Jul 19	Jul 20	Jul 21
29	Jul 22	Jul 23	Jul 24	Jul 25	Jul 26	Jul 27	Jul 28
30	Jul 29	Jul 30	Jul 31	Aug 1	Aug 2	Aug 3	Aug 4
31	Aug 5	Aug 6	Aug 7	Aug 8	Aug 9	Aug 10	Aug 11
32	Aug 12	Aug 13	Aug 14	Aug 15	Aug 16	Aug 17	Aug 18
33	Aug 19	Aug 20	Aug 21	Aug 22	Aug 23	Aug 24	Aug 25
34	Aug 26	Aug 27	Aug 28	Aug 29	Aug 30	Aug 31	Sep 1
35	Sep 2	Sep 3	Sep 4	Sep 5	Sep 6	Sep 7	Sep 8
36	Sep 9	Sep 10	Sep 11	Sep 12	Sep 13	Sep 14	Sep 15
37	Sep 16	Sep 17	Sep 18	Sep 19	Sep 20	Sep 21	Sep 22
38	Sep 23	Sep 24	Sep 25	Sep 26	Sep 27	Sep 28	Sep 29
39	Sep 30	Oct 1	Oct 2	Oct 3	Oct 4	Oct 5	Oct 6
40	Oct 7	Oct 8	Oct 9	Oct 10	Oct 11	Oct 12	Oct 13
41	Oct 14	Oct 15	Oct 16	Oct 17	Oct 18	Oct 19	Oct 20
42	Oct 21	Oct 22	Oct 23	Oct 24	Oct 25	Oct 26	Oct 27
43	Oct 28	Oct 29	Oct 30	Oct 31	Nov 1	Nov 2	Nov 3
44	Nov 4	Nov 5	Nov 6	Nov 7	Nov 8	Nov 9	Nov 10
45	Nov 11	Nov 12	Nov 13	Nov 14	Nov 15	Nov 16	Nov 17
46	Nov 18	Nov 19	Nov 20	Nov 21	Nov 22	Nov 23	Nov 24
47	Nov 25	Nov 26	Nov 27	Nov 28	Nov 29	Nov 30	Dec 1
48	Dec 2	Dec 3	Dec 4	Dec 5	Dec 6	Dec 7	Dec 8
49	Dec 9	Dec 10	Dec 11	Dec 12	Dec 13	Dec 14	Dec 15
50	Dec 16	Dec 17	Dec 18	Dec 19	Dec 20	Dec 21	Dec 22
51	Dec 23	Dec 24	Dec 25	Dec 26	Dec 27	Dec 28	Dec 29
52	Dec 30	Dec 31	Jan 1	Jan 2	Jan 3	Jan 4	Jan 5

